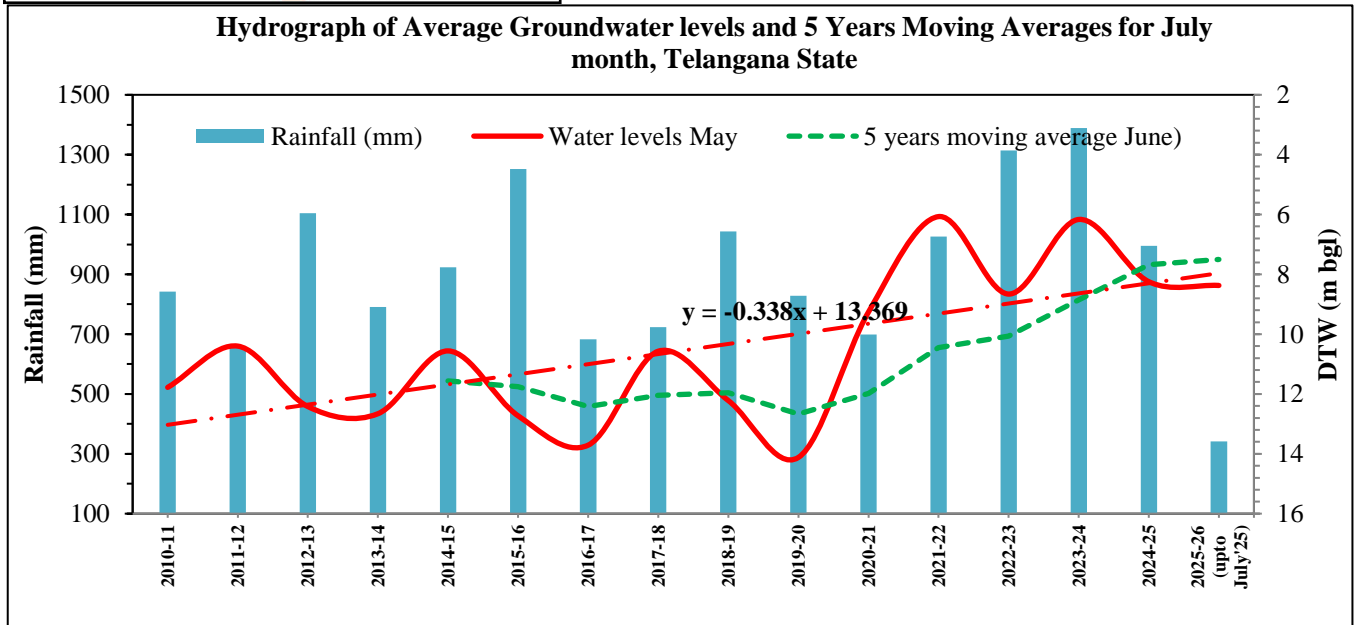
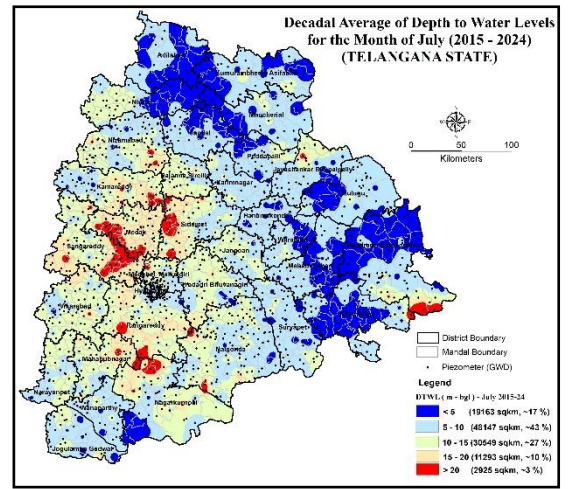
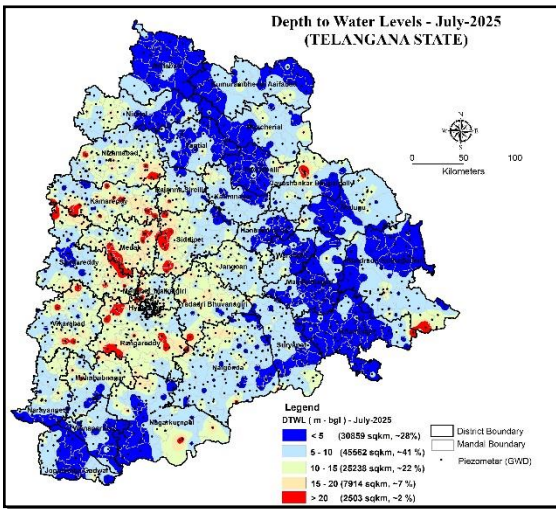


**GOVERNMENT OF TELANGANA  
GROUND WATER DEPARTMENT**

**STATUS OF GROUND WATER LEVEL SCENARIO  
(JULY-2025)  
(TELANGANA STATE)**



**GROUND WATER MONITORING CELL  
GROUND WATER DEPARTMENT  
GOVERNMENT OF TELANGANA,  
HYDERABAD  
AUGUST-2025**

**GOVERNMENT OF TELANGANA**  
**GROUND WATER DEPARTMENT**  
**STATUS OF GROUND WATER LEVELSCENARIO**  
**(JULY-2025)**

<b>S. No.</b>	<b>Chapter</b>	<b>Page</b>
1	Introduction	1
2	Rainfall	1
3	Depth to Water Level During July-2025	5
	3.1   Water Table Elevations (a msl)	6
	3.2   Formation Wise Minimum, Maximum & Average Water Levels (mbgl)	9
4	Water Level Fluctuation During July-2025 w.r.t. July-2024 (Annual)	10
5	Water Level Fluctuation During July-2025 with Reference to May-2025 (Seasonal)	11
6	Decadal Average Groundwater Levels July (2015-2024)	12
7	Water Level Fluctuation-Decadal Mean of July (2015-2024) With Reference to July-2025	15
8	Change in Groundwater Storage (Dynamic) during July-2025 with respect to July-2024	17
9	Deep Water Levels (> 20 m.bgl)	17
10	Ground Water Drought Index	18
11	Groundwater Scenario in Kaleshwaram Lift Irrigation Project Area	19
12	Conclusion and Recommendations	20
<b>Figures</b>		<b>Page</b>
Fig.1	District Wise Normal & Actual Rainfall During the Water Year 2025-26 (Up to July-2025).	3
Fig.2	Mandal Wise Categorization of Rainfall, Telangana.	3
Fig.3	Mandal Wise rainfall deviation water year 2025-2026 (up to July-2025).	4
Fig.4	Depth to Water Levels Range During July-2025, Telangana.	6
Fig.5	District Wise Minimum, Maximum and Average Water Levels July-2025.	6
Fig.6	Depth to Water Levels During July-2025, Telangana State.	7
Fig.7	Water table Elevations during July-2025, Telangana State.	7
Fig.8	Formation Wise Minimum, Maximum and Average water level(m.bgl), July-2025.	8
Fig.9	Water Level Fluctuations in July-2025 Wrt July-2024.	9
Fig.10	Water Level Fluctuations in July-2025 Wrt May-2025.	10
Fig.11	Depth to water levels Decadal Average during July (2015-2024), Telangana State.	11
Fig.12	Hydrograph of Moving average Groundwater levels	13
Fig.13	Decadal Average Ground Water Level Trend and Rainfall, Telangana State.	14
Fig.14	Percentage of Wells showing rise/fall during July-2025 Wrt to Decadal mean of July (2015-2024).	16
Fig.15	Water Level Fluctuations w.r.t to Decadal average July (2015-2024).	16
Fig.16	Ground Water Drought Index for the month of July-2025, Telangana State	18
Fig.17	Water level scenario in KLIP July-2025.	19
Fig.18	Water level scenario in KLIP July (2015-2024).	19
<b>Tables</b>		<b>Page</b>
Table-1	District Wise & Mandal Wiser Rainfall Deviation During Water Year 2025-26 (Up to July-2025).	2
Table-2	Formation Wise Minimum, Maximum and Average water level(m.bgl), July-2025.	8
Table-3	Details of Mandals With Ground Water Levels More than 20 m During July-2025.	21-23
<b>Annexures</b>		<b>Page</b>
I	Comparison of Average Depth to Ground Water Levels and Rainfall of July-2025 To Decadal, Annual and Seasonal.	23
II	Mandal wise Cumulative Actual Rainfall Report Up to July-2025.	24-39
III	Depth to Water Level in July-2025.	40
IV	Fluctuation During July-2025 wrt July-2024.	41
V	Fluctuation During July-2025 wrt May-2025.	42
VI	Fluctuation Decadal Mean from July-2015 To July -2024 Wrt July-2025.	43

**List of Officers/Officials Who Carried Out Ground Water Level  
Monitoring, During July-2025**

S.No.	Name of The Field Officer (Shri/Kum/Smt)	Designation	Districts	Name of The Supervisory officer (Shri/Kum/Smt)
1	T. Pulla Rao	A.Hg	Adilabad	A. Srivalli, AD (Hg)
2	Navaneeth	A.Gp	Komurambheem Asifabad	K.Suhasini, AD (Hg) I/c
3	Raj Kumar	A.Hg	Bhadradri Kothagudem	M. Ramesh, AD (Hg)
4	Prashanth & Srikanth	AGp & A.Hg	Gadwal-Jogulamba	Dr. G. Mohan, AD (Hg)
5	S Shruthi	A.H	Hanumakonda	Ch. Shailasree Mallika Devi, DD (Hg)
6	A. Vasu	A.H	Hyderabad	K. Jagannadha Rao, DD (Hg)
7	V. Kumar	A.Hg	Jagityal	G.Nagaraju AD (H) I/c
8	CH Narsimhulu	A.Gp	Jangaon	M. Ashok, AD (Hg) I/c
9	P Ramakrishna	A.Hg	Jayashankar-Bhupalapally	K.Srinivas Rao, AD (Hg)
10	S Premalatha	A.Hg	Kamareddy	M. Sathish Yadav AD (Hg)
11	A Abhilash	A.H	Karimnagar	B. Shyam Prasad Naik, DD (Hg)
12	G. Vishnu	A.H	Khammam	M. Ramesh, AD (Hg) I/c
13	Bavu Srivas	A.Gp	Mahabubabad	V Suresh, AHg I/c
14	Lavanya & Dheeraj Kumar	A.Hg	Mahabubnagar	Dr. G. Mohan, AD (Hg) I/c
15	B Ganesh	A.Hg	Mancherial	P. Srinivasa Babu, DD (Gp) I/c
16	Lavanya	A.Hg	Medak	M. Sathish Yadav AD (Hg) I/c
17	LR Karthika Priya	A.H	Medchal-Malkajigiri	M Harish Babu, AD (H)
18	K. Krushnakanth	A.Hg	Mulugu	Deepa reddy, AD (Hg) I/c
19	M. Lingaswamy	A.Hg	Nagarkurnool	D.Divya Jyothi, AD (H)
20	N.Kumar & Rajini	AH& A.Gp	Nalgonda	K.Revathi, DD (H)
21	J.VamshiKrishna	TAHg	Nirmal	P. Srinivasa Babu, DD (Gp) I/c
22	M.Naresh	A.HG	Narayanpet	V. Ravi, AHg I/c
23	Nikhathparveen	A.Gp	Nizamabad	P. Srinivasa Babu, DD (Gp)
24	Ch Venu	A.H	Peddapally	G Lavanya, AD (Gp)
25	B.Sangeetha & Keerthana	A.H & AE	Rangareddy	S. Madhava Rao, AD (Gp)
26	Santhosh Kumar & Balakrishna	A.Hg & AEE	Sangareddy	G.Narsimhulu, DD (H) I/c
27	Fouzia Huma	A.H	Siddipet	G.Nagaraju AD (H)
28	M. Praveen Kumar	A.H	Siricilla-Rajanna	C. Seetharam, DD (GP) I/c
29	M.D Sufianuddin Onaib	A.H	Suryapet	M. Balu, AD (Hg)
30	Md. Wajiuddin	A.Hg	Vikarabad	K. Ravi Shankar, AD (Gp)
31	M.Umesh	A.Hg	Wanaparthy	D.Divya Jyothi, AD (H) I/c
32	B.Ravi & Gurugovind Singh	A.Hg& TAH	Warangal	M. Ashok, AD (Hg)
33	Ashwith	AE	Yadadri-Bhongiri	P. Jyothi Kumar, DD (Hg) I/c

**DATA ENTRY, DATA VALIDATAION, MAP GENERATION &  
REPORT WRITING**

S.No.	Name of The Officer/Official	Designation
1	<b>Dr. K. Mahesh Kumar</b>	<b>Deputy Director (H/NHP) I/C Data centre</b>
3	<b>Shri. E. Goverdhan</b>	<b>Asst. Hydrologist</b>
4	<b>Kum. P. Ravali</b>	<b>Asst. Hydrologist</b>

UNDER SUPERVISION OF  
**Shri K. VENKATESHWARA RAO, JOINT DIRECTOR**

UNDER THE OVERALL GUIDANCE OF  
**Shri. K.LAXMA,  
DIRECTOR**

GROUND WATER DEPARTMENT  
GOVERNMENT OF TELANGANA  
**HYDERABAD**

**STATUS OF GROUND WATER LEVEL SCENARIO, DURING JULY-2025  
(TELANGANA STATE)**

**EXECUTIVE SUMMARY**

1. During the water year 2024-25 (up to 31<sup>st</sup> July-2025), State received 4 % deficit rainfall as compared to normal rainfall during the same period (458mm against 342mm).
2. Out of 33 districts, 04 districts received excess rainfall, 24 districts received normal rainfall and 05 district received deficient rainfall and no districts received Scanty rainfall.
3. Out of 621 mandals, 108 mandals received excess rainfall (+20 % and above to normal), 335 mandals received normal rainfall (-19 to +19 %) and 178 mandals received deficit rainfall (-20 % to -59%) and no mandals received scanty rainfall (-60 % to -99 %).
4. During July-2025, total 2024 wells were monitored (Pz: 1771 and DW:253).
5. Minimum and maximum depth to water level recorded 0.01 m bgl in piezometer at Jankapur village, Kannepalli mandal of Mancherial and Koyyur & Pedhamedisheleru villages of Cherla mandals of Bhadradi district and maximum of 77.06 m bgl in piezometer at Bachupally village and mandal of Medchal Malkajgiri district respectively.
6. Water Levels in the range of <5 m bgl covers ~28% of State area, 5 to 10 m bgl covers ~41% and are more predominate area, 10-15 m bgl covers ~22% and deep water levels i.e., 15-20 m bgl covers ~7% & >20 m bgl covers ~2% of State area combinely mostly covering central - western and southern parts of State falling in districts. Further, 59 mandals are showing further decline in water levels as compared to July-2024 water levels.
7. The State average water level during July-2025 is **8.37** m bgl as compared to 8.25 m bgl during same month in 2024 and shows a fall of ~0.13m.
8. A net average fall of 0.13m in groundwater levels is observed during July-2025 as compared to July-2024.
9. Water level fluctuation during July-2025 with respect to July-2024 shows a maximum rise of 23.29m at Yal Malamanda village, Chandampet mandal of Nalgonda district and Maximum fall of 29.12m is recorded at Eliminedu village, Ibrahimpatnam mandal of Rangareddy district and 49 % Observation wells shows a rise and 51 % wells shows a fall in water levels during this period.
10. Water level fluctuation during July-2025 with respect to May-2025 depict an average rise of 1.69m.
11. Water level fluctuation during July-2025 with respect to May-2025 shows a maximum rise of 44.30 m at Ichoda village and mandal of Adilabad district and fall of 30.42 m at Eliminedu village, Ibrahimpatnam mandal of Rangareddy district and 77% Observation wells shows a rise and 23 % wells shows a fall in water levels during this period.
12. During July-2025 as compared to May-2025, deep-water level area (>20m) decreased by ~1,236 km<sup>2</sup> i.e., from 3639 km<sup>2</sup> to 2503 km<sup>2</sup>.
13. Water levels during the month of July-2025 when compared with Decadal average of July (2015-2024) shows a rise in 431 mandals (75%) (0-22.84m) and 66% wells and fall in 190 mandals (25%) (0.04-22.99m) and 34% wells.
14. The rise (compared to decadal Average of July (2015-2024)) up to 0.5 m is observed in 75 mandals, 0.5-1.0 m in 65 mandals, 1-2 m in 112 mandals and > 2 m in 179 mandals covering central parts of Adilabad, south western parts Nirmal and Asifabad, western parts of Kamareddy, western parts of Nizamabad, western & south-central parts of Peddapally, and Siddipet, except central & western parts of entire Sangareddy, northern part of Medak, north, south-eastern parts of Jangaon, Warangal, Hanumakonda, Mahabubabad, and Mahabubabagr, except central & northern parts of entire Suryapet, Soth-western and eastern parts of Nalgonda, central & north-western parts of Nagarkurnool, south-central and northern parts of Gadwal, north-eastern and western parts of Vikarabad, northern parts of Rangareddy, southern parts of Narayanpet and Bhadradi Kothagudem districts.
15. The fall (compared to decadal Average of July (2015-2024)) up to 0.5 m is observed in 51 mandals, 0.5-1 m in 38 mandals, 1-2 m in 51 mandals and > 2 m in 50 mandals in southern parts of Adilabad, south-central parts of Nizamabad, south western and eastern parts of Kamareddy and Medak, central parts of Jagityal, south-eastern parts of Asifabad, north-eastern parts of Bhupalapilly, Mahabubabad, northern parts of Vikarabad, central parts of Nalgonda, Medak, Medchal & Hyderabad, western parts Yadadri and northern parts of Bhadradi Kothagudem, and western Narayanpet and Mahabubnagar, southern parts of Nagakurnool districts.
16. Out of 621 mandals, 585 (94%) mandals falls under Normal category of ground water drought Index during the July-2025 and 19 mandals are falls in Mild, 08 mandals are falls in Moderate, 03 mandals are falls in Severe and 06 mandal are falling in Extreme category.
17. The dynamic change in groundwater storage during the season there is estimated at 170TMC storage in comparison with May-2025 water levels (up to July-2025). Aproximately a net recharge of 110TMC is estimated during July-2025 compared to June-2025.

**GOVERNMENT OF TELANGANA  
GROUND WATER DEPARTMENT**

**REPORT ON GROUND WATER LEVEL SCENARIO IN TELANGANA STATE  
BASED ON WATER LEVELS RECORDED FROM PIEZOMETERS  
IN THE MONTH OF JULY-2025**

**1. INTRODUCTION**

Ground Water Department, Government of Telangana is monitoring changes in groundwater regime on monthly basis continuously through a network of 1771 monitoring stations (Piezometers) in the State in different hydro geological and geo-morphic units from commonly developed aquifers. During July-2025, 1666 monitoring wells were monitored and 105 piezometers could not be monitored due to various reasons. The water level data is analyzed in relation to rainfall, recharge measures, drought and extraction of groundwater in the State. The data of July-2025 also compared with earlier periods for studying the seasonal, annual fluctuations and mean of last ten years (Decadal fluctuation). The analytical results are depicted through various graphs, tables and maps generated on GIS platform.

**2. RAINFALL(PRECIPIATION)**

Rainfall is the principal source of input for groundwater recharge in the State and behavior of groundwater table is essentially governed by rainfall, its quantity, intensity and frequency. The State as a whole received 342mm rainfall (till 31<sup>st</sup> July-2025) against a normal rainfall of 358mm, which is ~4% less than the normal annual rainfall during **2025-26 Water Year (from 1<sup>st</sup> June-25 to 31<sup>st</sup> July-2025)**. The southwest monsoon contributes ~79 % of normal rainfall, 14 % is contributed by northeast monsoon and rest by other seasons in the State of Telangana.

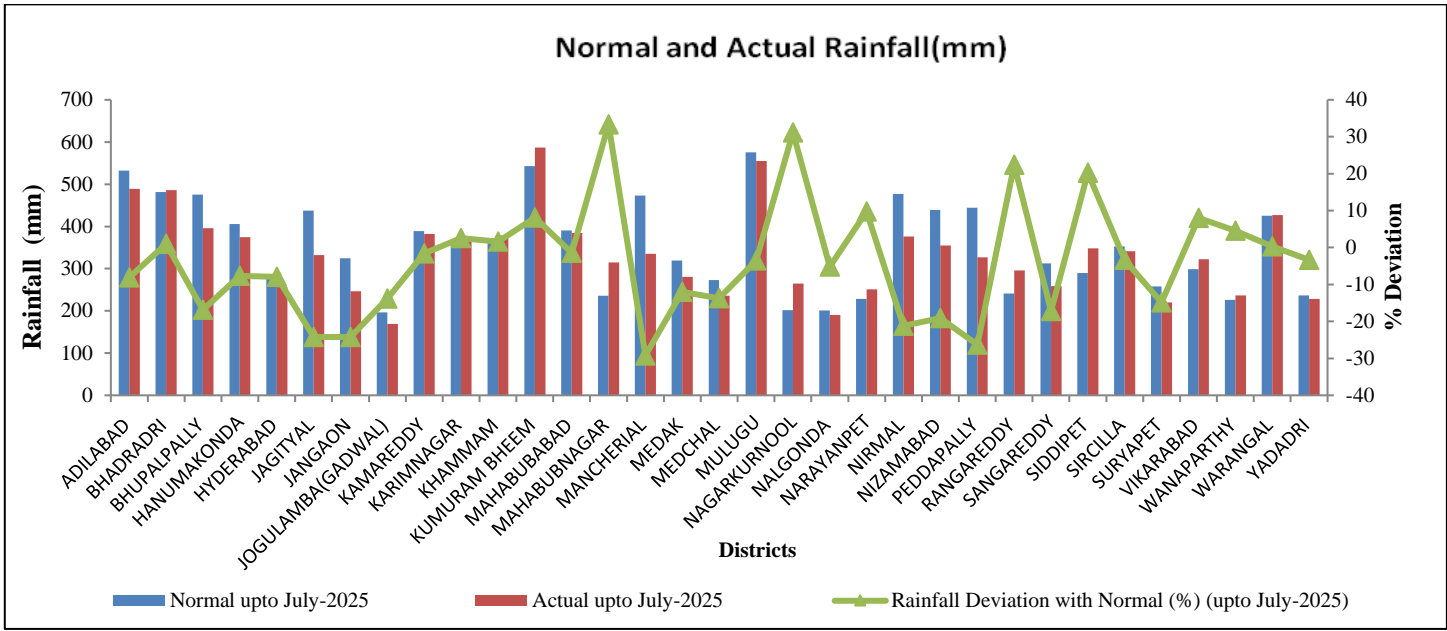
Out of 33 districts, 04 districts received Excess rainfall (+20% and above), 24 districts received Normal rainfall (-19 % to +20 %) and 05 district received deficient rainfall (-20 % to -59 %) and no districts received Scanty rainfall (-60 % to -99 %). (**Table-1, Fig.1 and Annexure-I**). Out of 621 mandals, 108 received excess rainfall (+20 % and above), 335 received normal rainfall (-19 % to +19 %), 178 received deficit rainfall (-20 % to -59 %) and no mandals received scanty rainfall (-60 % to -99 %) respectively (**Fig.2 and Annexure-II**). The Mandal wise rainfall deviation map is presented in **Fig.3**.

**Table-1: - District & Mandal wise rainfall deviations during the Water Year 2025-26 (up to July-2025).**

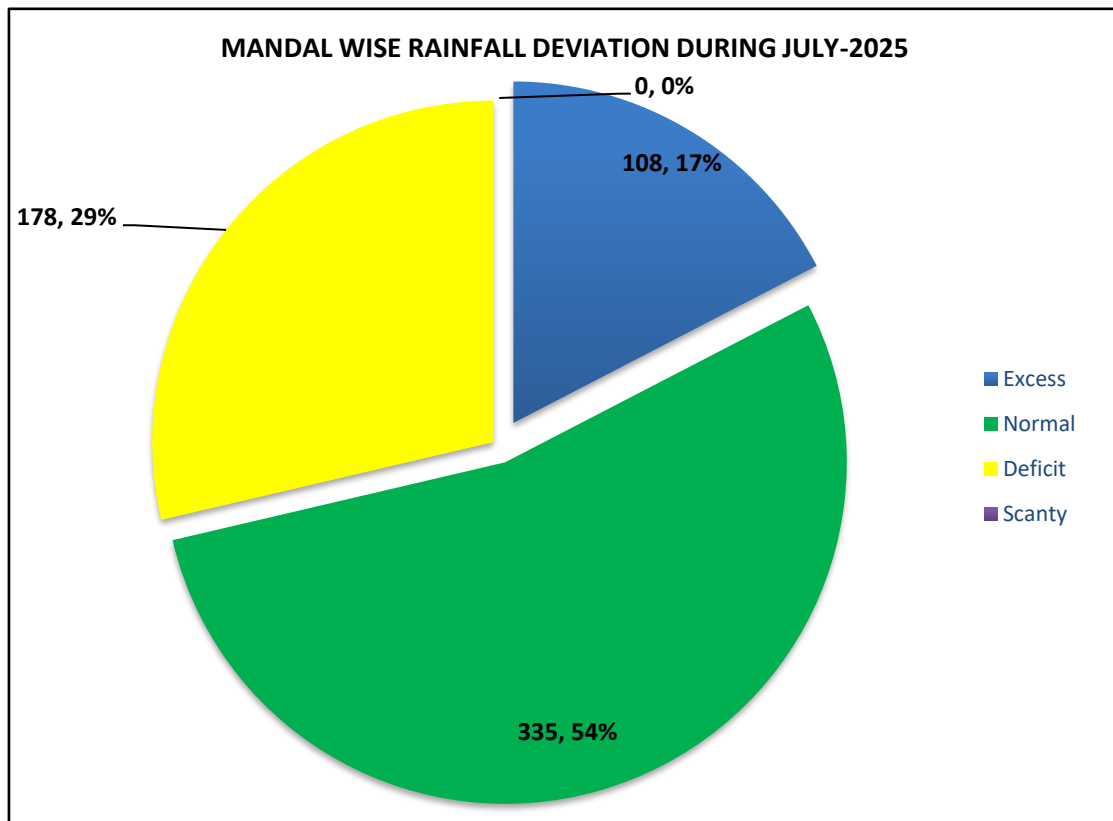
S. No.	Deviation	Districts	District (No's)	Mandal (No's)
1	Excess (20 % & Above)	Mahabubnagar (33%), Nagarkurnool(31%), Rangareddy (22%) and Siddipet (20%)	04	108
2	Normal (+19 % to -19%)	Narayanpet(10%), Kumuram Bheem (8%), Vikarabad (8%), Wanaparthy (5%), Karimnagar (3%), Khammam (2%), Bhadradri (1%), Warangal (0%), Mahabubabad (-1%), Kamareddy (-2%), Yadadri (-3%), Sircilla (-3%), Mulugu(-4%), Nalgonda (-5%), Hanumakonda(-8%), Hyderabad (-8%), Adilabad (-8%), Medak (-12%), Medchal (-14%), Jogulamba(Gadwal) (-14%), Suryapet (-15%), Bhupalpally (-17%), Sangareddy(-17%) and Nizamabad (-19%),	24	335
3	Deficient (-20 % to -59 %)	Nirmal (-21%), Jangaon (-24%), Jagityal (-24%), Peddapally (-26%) and Mancherial (-29%)	05	178
4	Scanty (-60 % to -99 %)	Nil	0	0
<b>State received actual rainfall 342mm against 358mm normal rainfall (up to 31<sup>st</sup> July-2025) (Deficit of 4%).</b>				

**(Source: O/o The Directorate, Economics and Statistics Department, Hyderabad).**

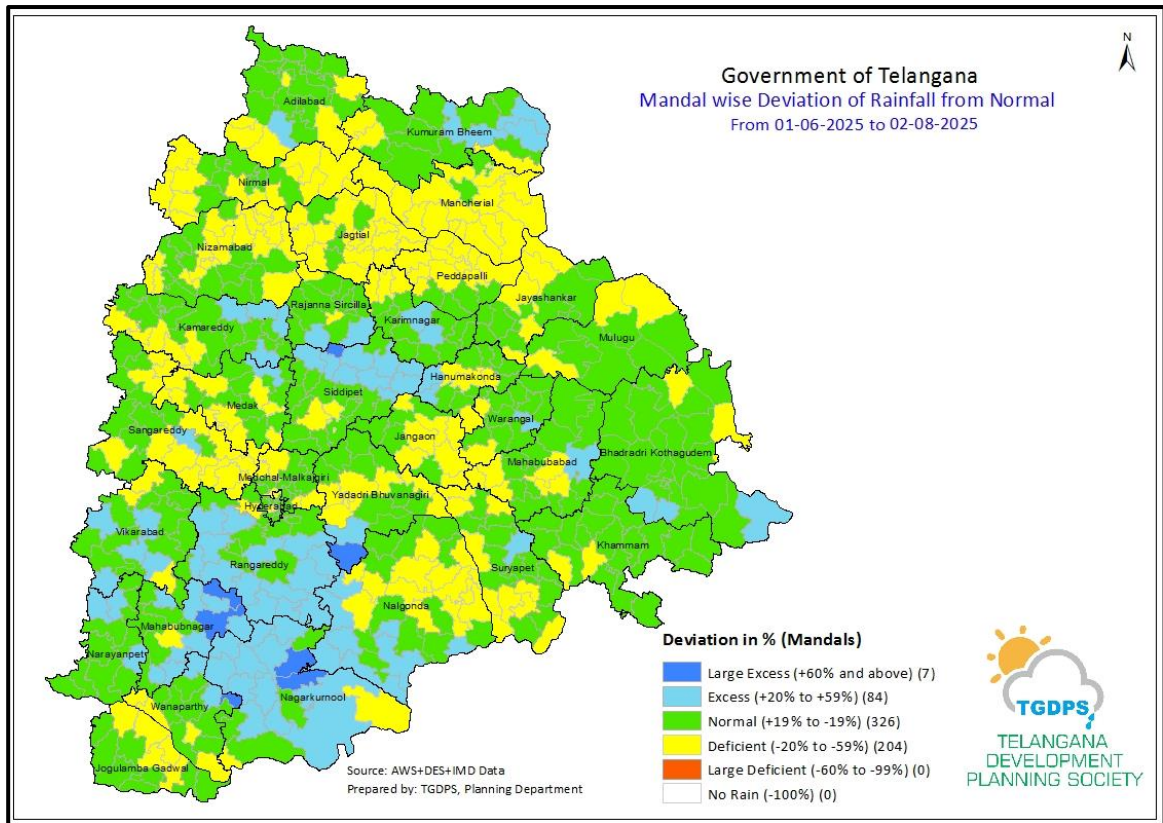
From **Table-1 & Fig.1**, it is observed that there is **04** district received excess rainfall i.e, Mahabubnagar, Nagarkurnool, Rangareddy and Siddipet, **24** districts received normal rainfall in the state and are more prevalent, **05** districts received deficit rainfall and **no** districts have recieved scanty rainfall in the State as shown in **Fig.3**



**Fig.1:** - District wise Normal & Actual Rainfall (water year 2025-26 upto the month of July-2025).



**Fig.2:** Mandal wise categorization of rainfall (water year 2025-26 up to July-2025), Telangana.



**Fig.3:** Mandal wise rainfall deviation for water year 2025-26 (till 31<sup>st</sup> July, 2025).

### 3. DEPTH TO WATER LEVEL DURING JULY-2025

The depth to water levels during July-2025 is summarized below and depicted in **Fig.4** as pie diagram and district wise minimum, maximum and average water levels are presented in **Fig.5.** as bar diagram.

The analysis of depth to water level data of piezometers (**Annexure-III**) reveals that minimum water level observed as 0.01 m bgl in piezometer at Jankapur village, Kannepalli mandal of Mancherial and Koyyur & Pedhamedisheleru villages of Cherla mandals of Bhadradi district and maximum of 77.06 m bgl in piezometer at Bachupally village and mandal of Medchal Malkajgiri district. The spatial distribution of depth to water levels is depicted in **Fig.6.**

#### The Salient features

- The district wise average groundwater level varies from 3.87 m bgl in Khammam district to 14.16 m bgl in Medak district with state average of **8.37** m bgl.
- Shallow water levels (<5 mbgl) occupies ~28 % of State area, covering except north and central parts of entire Adilabad, south-eastern parts Nirmal, east & western parts of Mancherial and Asifabad, east & northern parts of Jagityal, except eastern parts of entire Peddapally and Mulugu, north-eastern parts of Karimnagar, except western parts of entire Warangal, Hanumakonda & Mahabubabad, except south & eastern parts of entire Khammam, north eastern parts of Bhadradi & Nizamabad, east & south-central parts of Suryapet, north, eastern parts of Nalgonda, south-western parts of Nagarkurnool and Narayanpet, south-central parts of Jogulamba, east and western parts of Wanaparthy districts.
- Water levels in the range of 5-10 m bgl occupy ~41% and are more predominant in the state, followed by water levels in the range of 10-15 m bgl, covering ~22% of state area during this month.
- Moderately deep (15-20 m bgl) and very deep-water levels (>20 m bgl) occupy ~9% of State area combinedly and these are mostly covering south-western & central parts of Rangareddy, Kamareddy, Nizamabad, Medak, Medchal and Sangareddy, north and southern parts Vikarabad, southern parts of Nagarkurnool, western parts of Siddipet, north parts of Bhupalpally and south-eastern parts of Bhadradi districts.

#### 3.1 Water Table Elevations

Water table elevations (Reduced Levels) in meter above mean sea levels (a msl) during the month of July-2025 is depicted in **Fig.7.** From fig it is inferred that the minimum and maximum water table elevation varies from < 50 m a msl in Khammam and Bhadradi to > 650 m a msl in Vikarabad, Nagarkurnool and Rangareddy districts and in general groundwater flows from north-west to south-east directions in northern part (Godavari basin) and West to South-east directions in southern part of State (Krishna basin).

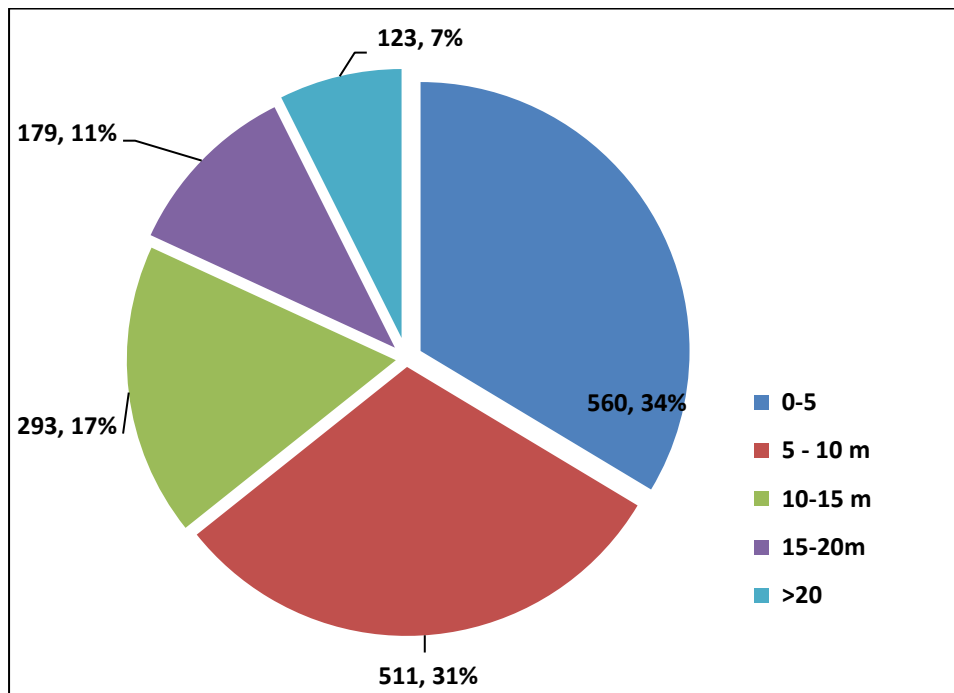


Fig.4: - Depth to water levels range in piezometers during July-2025.

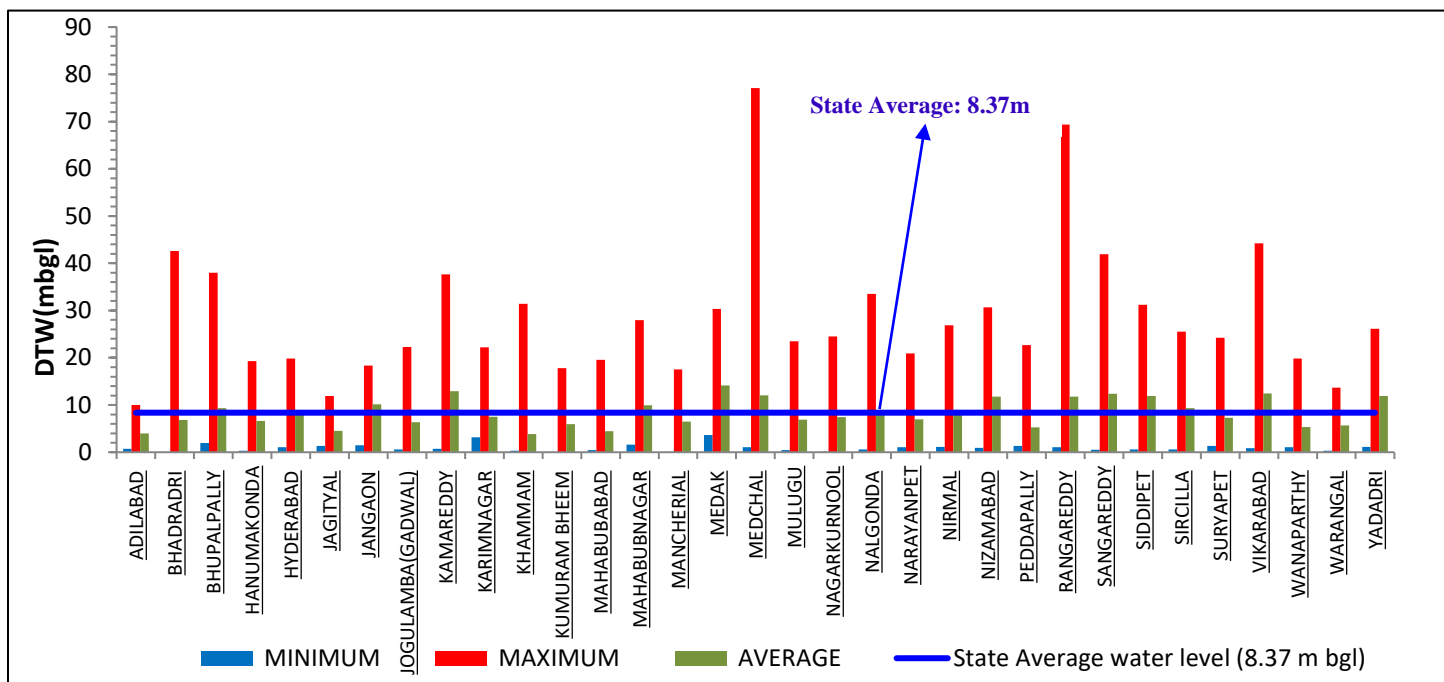
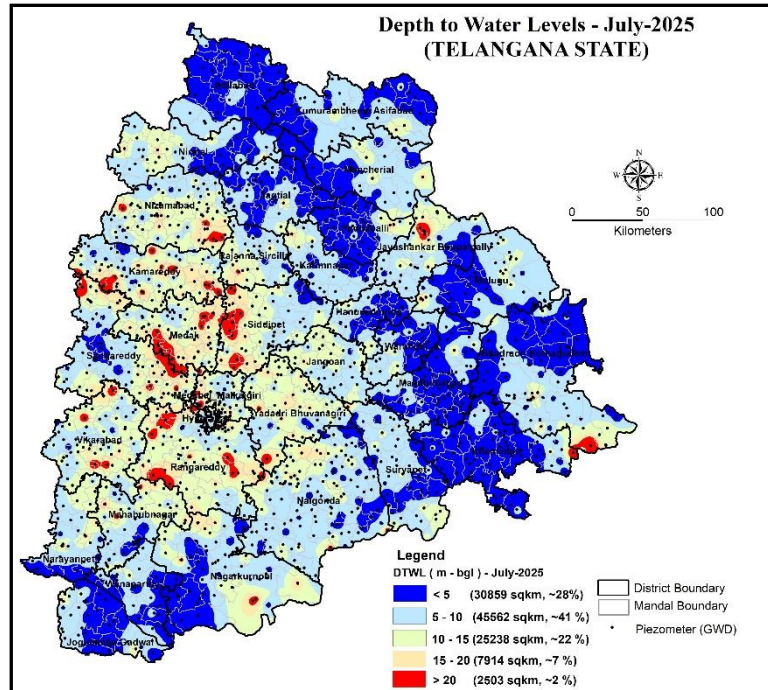
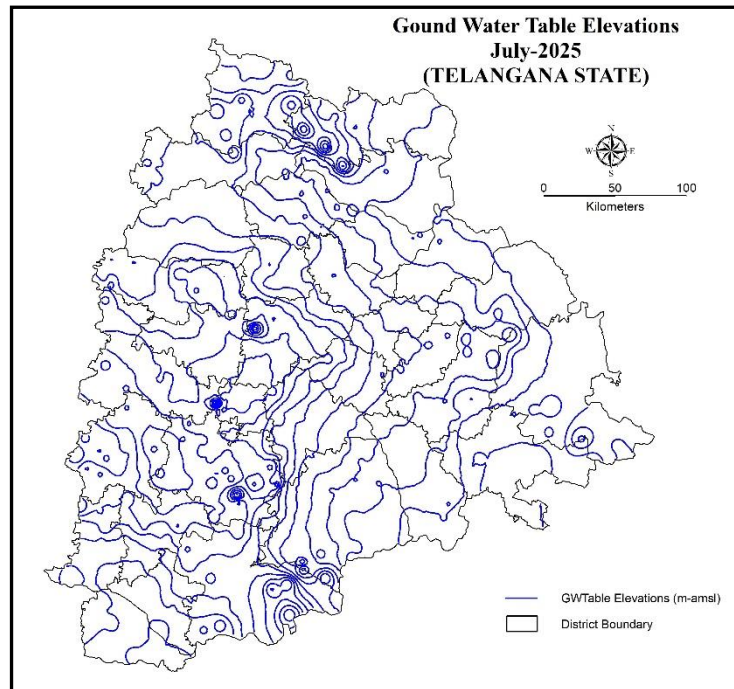


Fig.5: - District wise minimum, maximum & average water levels during July-2025.



**Fig.6:** - Depth to water levels during July-2025, Telangana State.



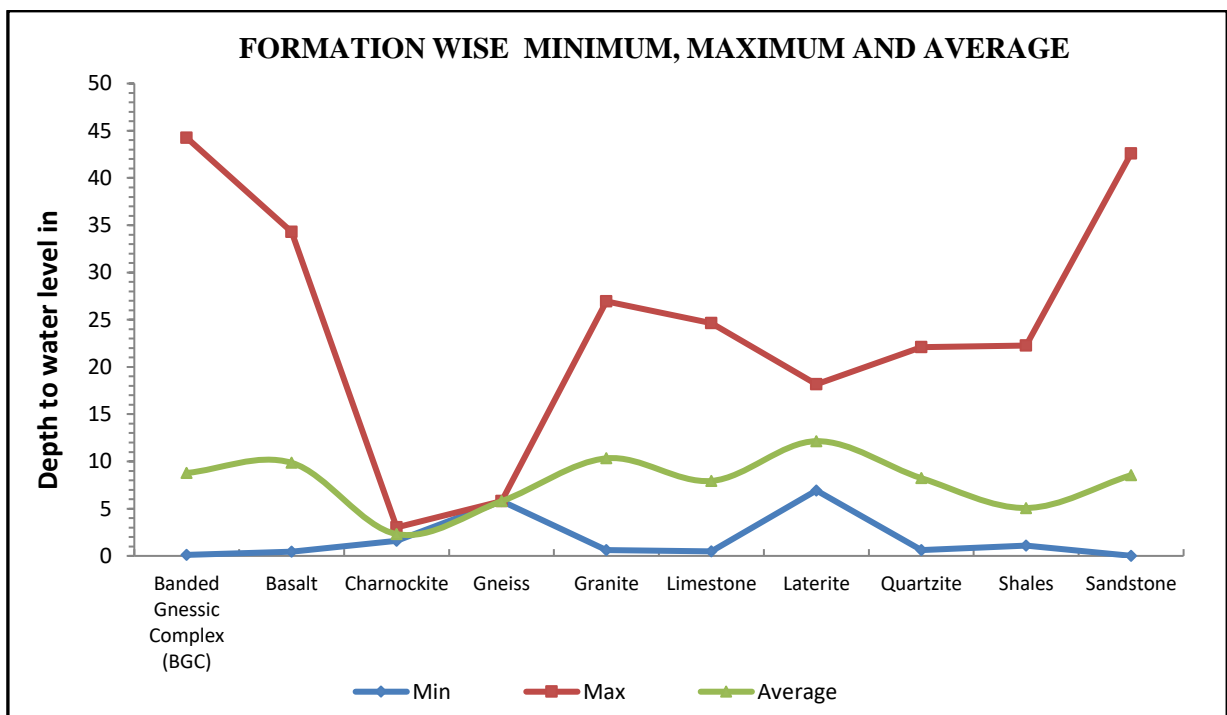
**Fig.7:** - Water table Elevations during July-2025, Telangana State.

### 3.2. Formation Wise Minimum, Maximum & Average Water Levels (m bgl)

Formation wise minimum, maximum and average water levels are given in **Table-2** and depicted in **Fig.8**. From **Table-2**, it is observed that average water levels are shallower in Charnockite formations (2.31m bgl) and deeper in Laterite formation (12.14m bgl) during the month. It is also observed that average water levels have risen in all formations except Granites formations as compared to last month's water levels (i.e., June-2025).

**Table-2: Formation wise Min, Max& Avg. Water Levels (m bgl), July-2025.**

S. No.	Formation	Min	Max	Average
1	Banded Gnessic Complex (BGC)	0.11	44.25	8.78
2	Basalt	0.45	34.30	9.85
3	Charnockite	1.60	3.02	2.31
4	Gneiss	5.79	5.79	5.79
5	Granite	0.61	26.94	10.33
6	Limestone	0.49	24.65	7.94
7	Laterite	6.93	18.17	12.14
8	Quartzite	0.60	22.09	8.23
9	Shales	1.10	22.26	5.07
10	Sandstone	0.01	42.58	8.55

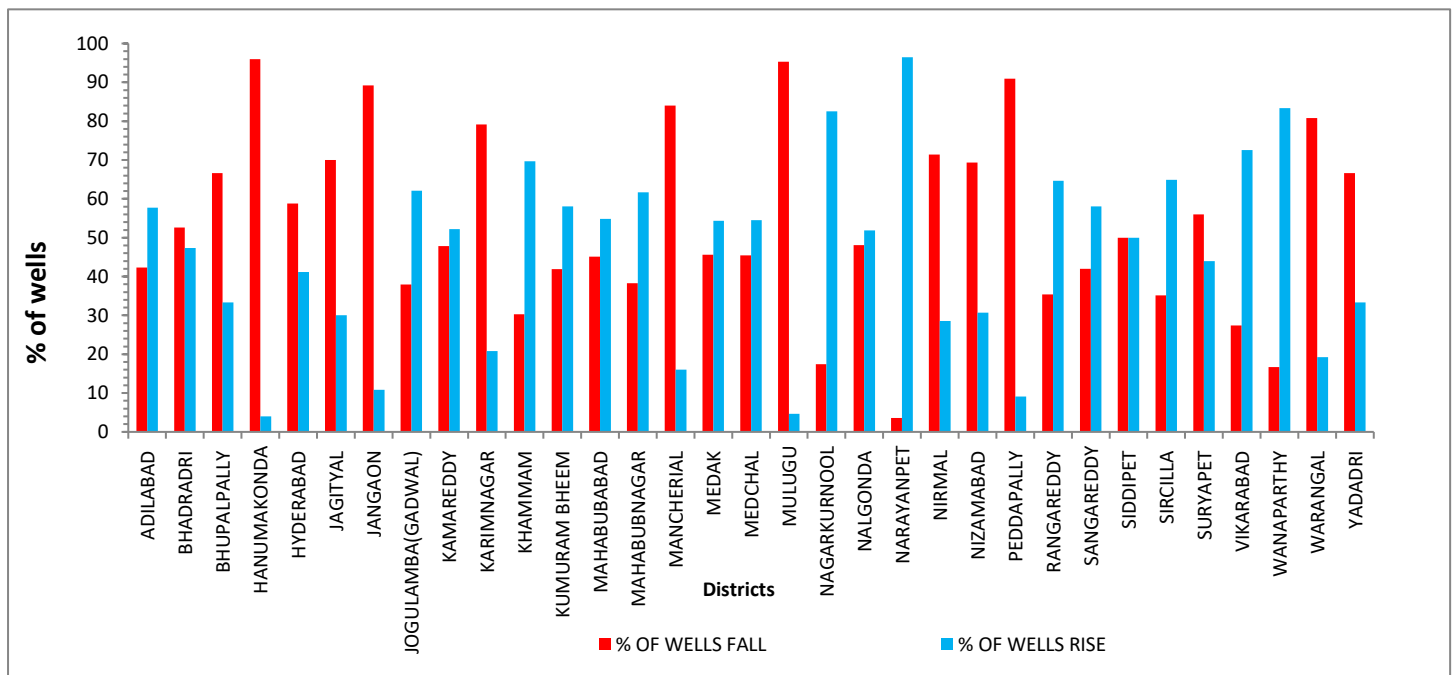


**Fig.8: - Formation Wise Minimum, Maximum and Average Water Level (m bgl), July-2025.**

#### 4. WATER LEVEL FLUCTUATION DURING JULY-2025 WITH REFERENCE TO (WRT) JULY-2024 (ANNUAL)

Water level fluctuations during July-2025 with respect to July-2024 are presented in **Annexure-IV**. The analysis of 1605 wells data shows that rise in water levels is recorded in 783 wells (49%) and a fall in 822 wells (51%) (**Fig. 9**). During the month, average water levels have shown a fall of 0.13m as compared to July-2024 water levels.

- The minimum rise in fluctuations is recorded as negligible at Mandalapalli village, Dammapeta mandal, karakagudem village, Karakagudem mandal and Koyyuru village, Cherla mandal of BHADRADRI, Chinthakunta & Sirput-T villages, Sirpur\_T mandal of Kumuram Bheem, Marripeda village, Maripeda mandal of Mahabubabad, Rayakur village, Rudrur mandal of Nizamabad, Bagayapalli village, Yelal mandal of Vikarabad and Yedutla village, Gopalpeta mandal of Wanaparthy district and maximum rise of 23.29m at Yalmalamanda village, Chandampet mandal of Nalgonda district.
- The minimum fall in fluctuations is recorded as 0.01m at Rangapur village, Kesamudram mandal of Mahabubabad district and maximum fall of 29.12m is recorded at Eliminedu village, Ibrahimpatnam mandal of Rangareddy district.
- District wise average water level fluctuation during July-2025 with respect to July-2024 shows an average rise from of 0.03m (in Medak) to 2.71m (in Hyderabad) with state average fall of 0.13 m. (**Annexure-I**).

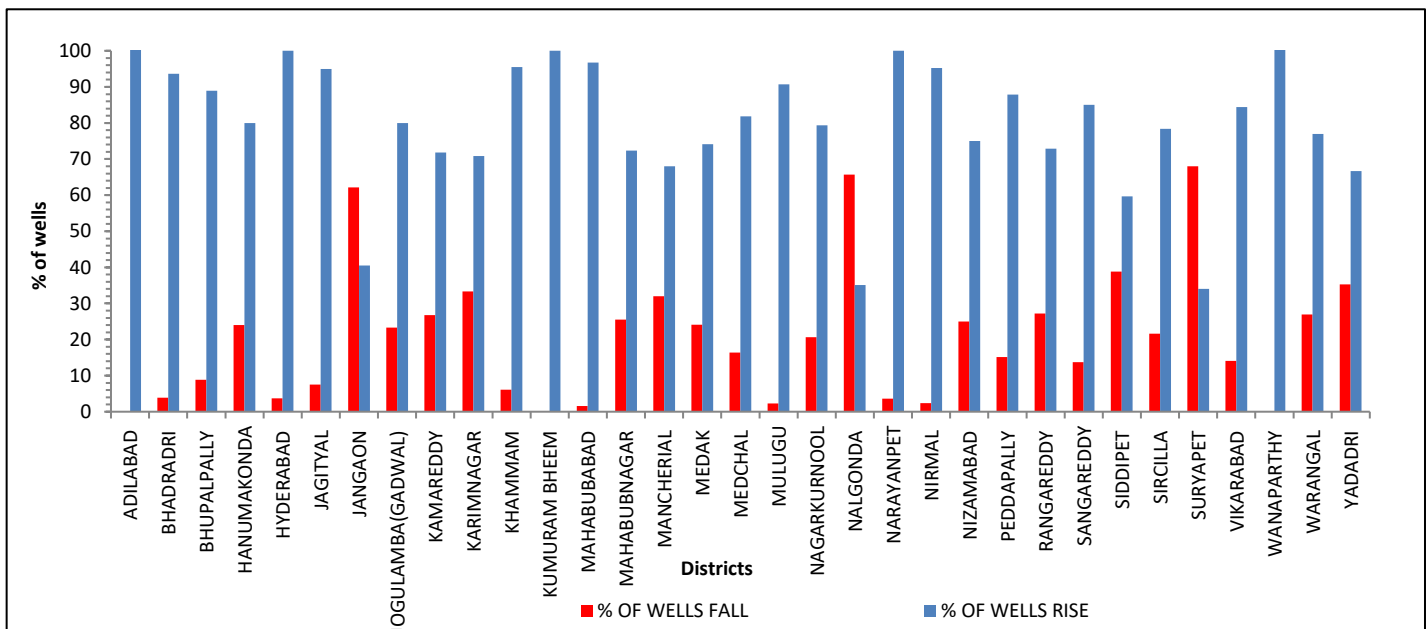


**Fig.9:** Water Level Fluctuations during July-2025 WRT July-2024.

## 5. WATER LEVEL FLUCTUATION DURING JULY-2025 WITH REFERENCE TO (WRT) MAY-2025 (SEASONAL)

Water level fluctuations during July-2025 with respect to May-2025 are presented in **Annexure-V**. The analysis of 1656 observation wells shows rise in water level in 1270 wells (77%) and fall in 386 wells (23%) (**Fig.10**).

- The minimum rise in fluctuations is recorded as negligible at Sirput-T village and mandal of Kumuram Bheem, Jankapur village, Kannepally mandal of Mancherial and Ramagundam village and mandal of Peddapally district and maximum rise of 44.30 m at Ichoda village and mandal of Adilabad district.
- The minimum fall in fluctuations of 0.03 m is recorded at Bachannapeta village & mandal of Jangon, Pondiyala village, Meheshwaram mandal and Yeravaguda village, Shankarpalle mandal of Rangareddy and Mator village of Mootakondur mandal of Yadadri district and maximum fall of 30.42 m at Eliminedu village, Ibrahimpatnam mandal of Rangareddy district district.
- District wise Water level fluctuation during July-2025 with respect to May-2025 shows an average fall from 0.11m (in Yadadri Bhuvanagiri) to 7.84 m (in Adilabad) with state average rise of 1.69m (20% Rise) in the State.

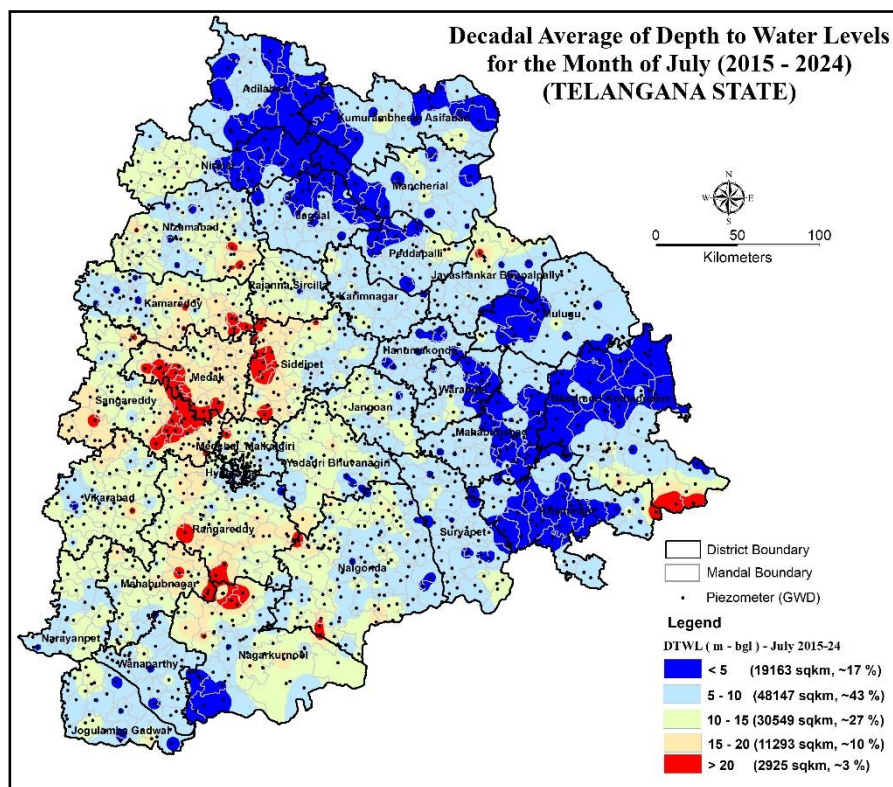


**Fig.10:** - Water Level Fluctuations during July-2025 WRT May-2025.

## 6. DECADAL AVERAGE GROUNDWATER LEVELS JULY (2015-2024)

District wise decadal average water levels during July month varies from 5.06m bgl (Khammam) to 17.41m bgl (Medak) with state average of **9.45 m bgl** (Annexure-I) (**Fig.11**) and the salient features are given below.

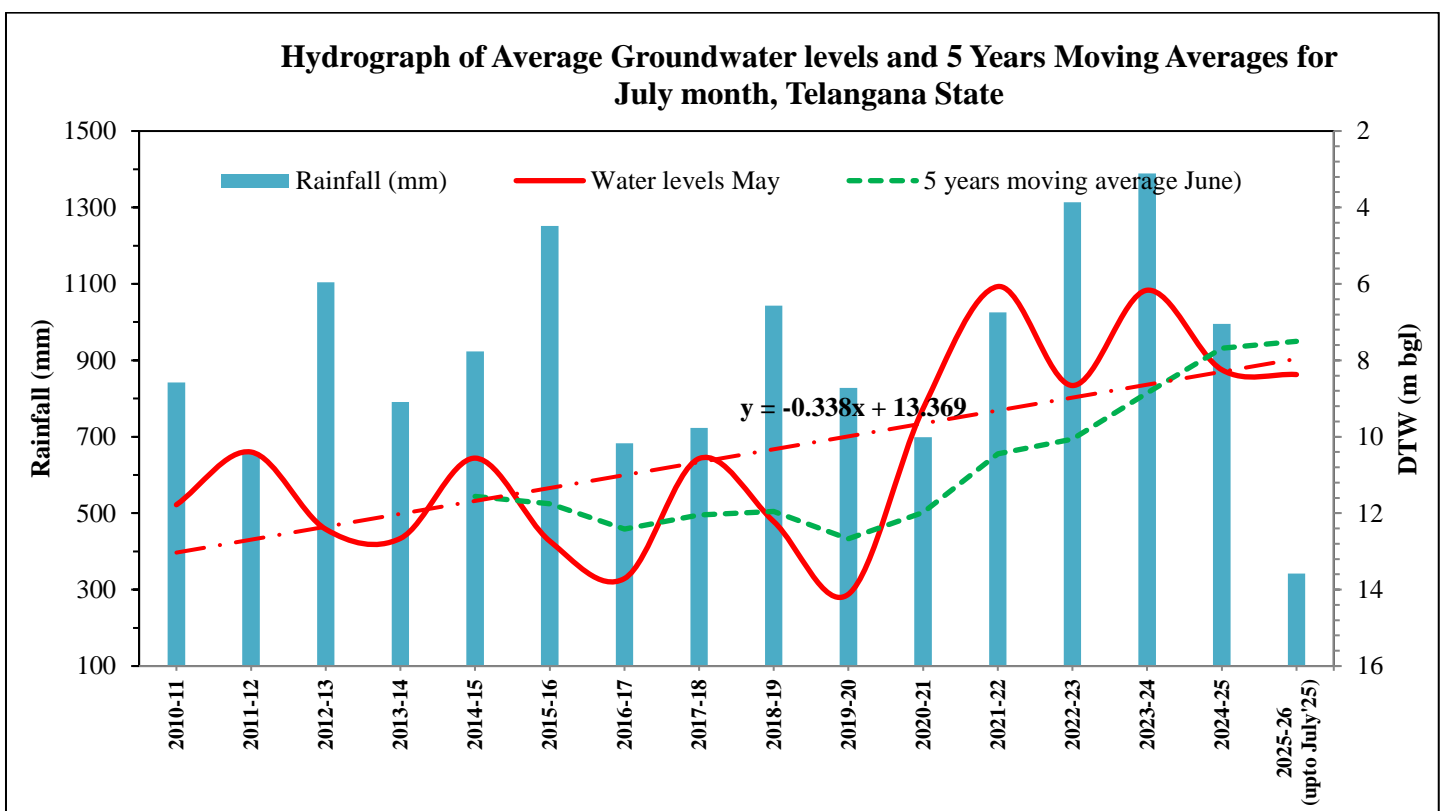
- < 5 m bgl water levels occupies ~17% of State area, mostly covering central & eastern parts of Adilabad and Nirmal, north-eastern part of Jagityal, east and western parts of Asifabad, Mancherial, Mulugu and Peddapally, central & south-western parts of Khammam, north-western oarts of Bhdradri, parts of Suryapet, Nalgonda, south-western parts of Nagakurnool, Wanaprthy and Jogulamba districts.
- 5-10 m bgl water levels occupy ~ 43 % and are more predominant and followed by 10-15 m bgl water levels occupy 27 % of State area.
- Moderately deep (15-20 m bgl) water levels occupies ~10 % of State area mostly covering south-central, western and eastern part of State and deep-water levels (>20 m bgl) occupies ~3 % of area mostly falling in south-central, western, northern and eastern part of State.
- The decadal average water levels during July (2015-24) month is 9.45m bgl and a rise of 1.08m (i.e., 13% Rise) is observed during July-2025 as compared to last decadal average water levels (for the month of July).(**Annexure-I**).



**Fig.11:** - Decadal Average depth to water levels, July (2015-2024).

**6.1 Moving Averages of groundwater levels :** An analysis of 16-years average groundwater levels data for the month of July clearly shows rising trend @ 33.80 cm/year in the state. This trend is also corroborated in five year data, where the moving average values for July month shows a constant rise in the water level, where as yearly data shows fluctuation till 2018 (**Fig.12**). The constant rise in water level after 2019 is validated by the rainfall and water-level analysis, which shows an inverse relation i.e., an increase in rainfall cause decrease in depth to water-level (shallower from ground level). From 2019 onwards, there is a constant increase in rainfall and there by constant rise in water-level. Thus, the antecedent rainfall has a direct influence in the water level, which indirectly emphasises the need to improve the management practices as the aquifer is potential to hold water for a long time.

- The Decadal average water level trend shows a rising trend @ 62 cm/yr (**Fig.13**).



**Fig.12:** Hydrograph of Moving average Groundwater levels for the month of July from 2010 to 2025

## HYDROGRAPH SHOWING MONTHLY AVERAGE GROUND WATER LEVELS AND RAINFALL (2015-2025), TELANGANA STATE

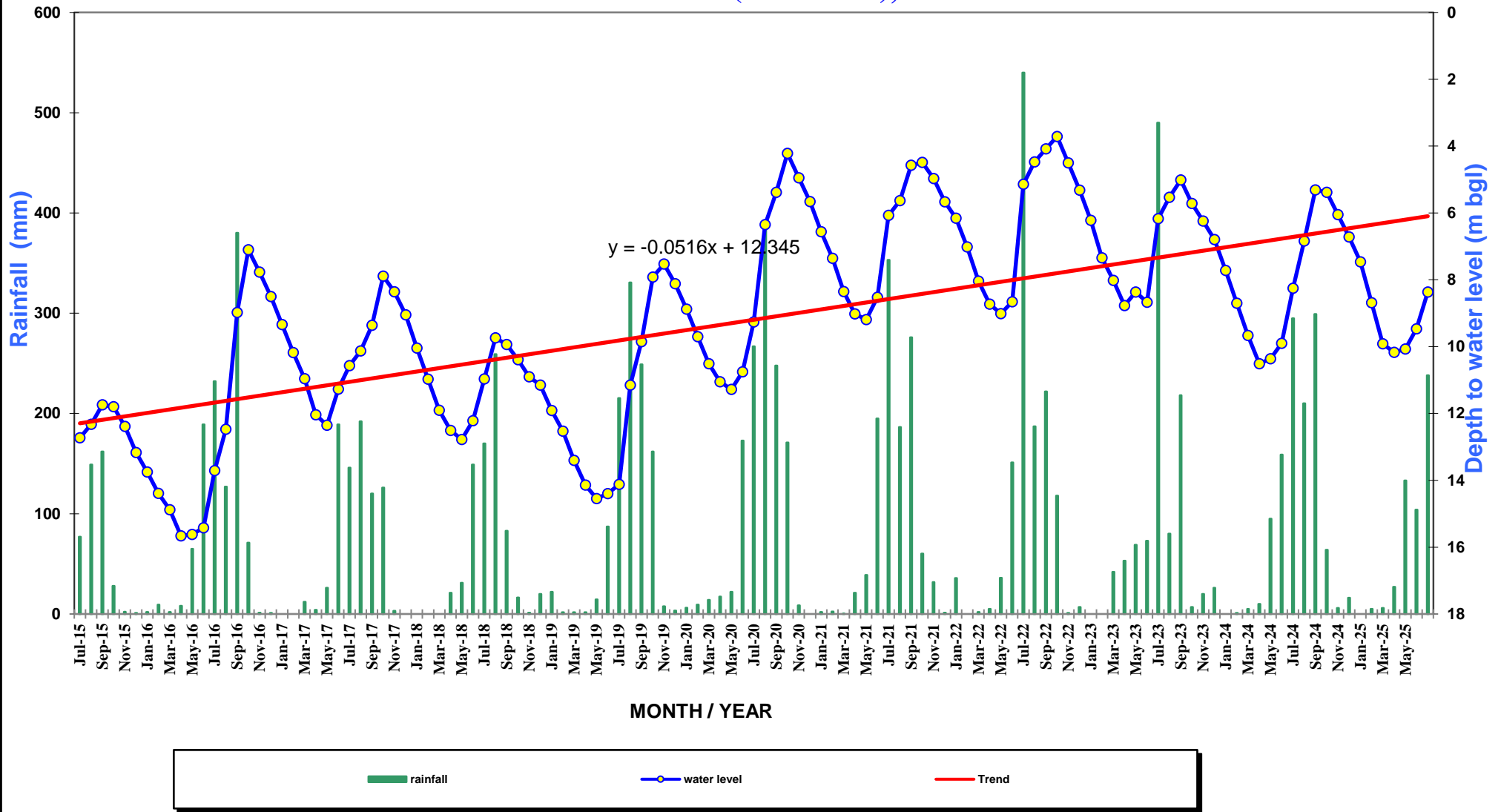
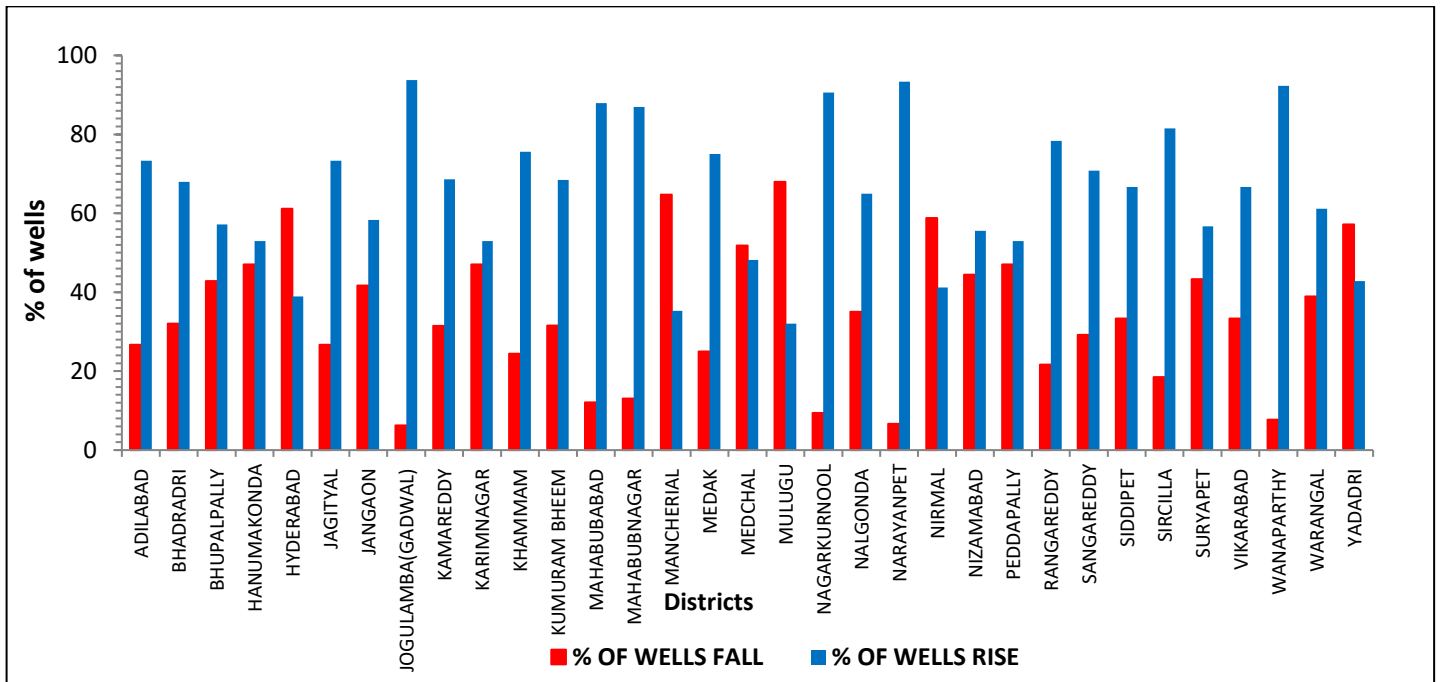


Fig:13: -Decadal average groundwater level trend and rainfall, Telangana State

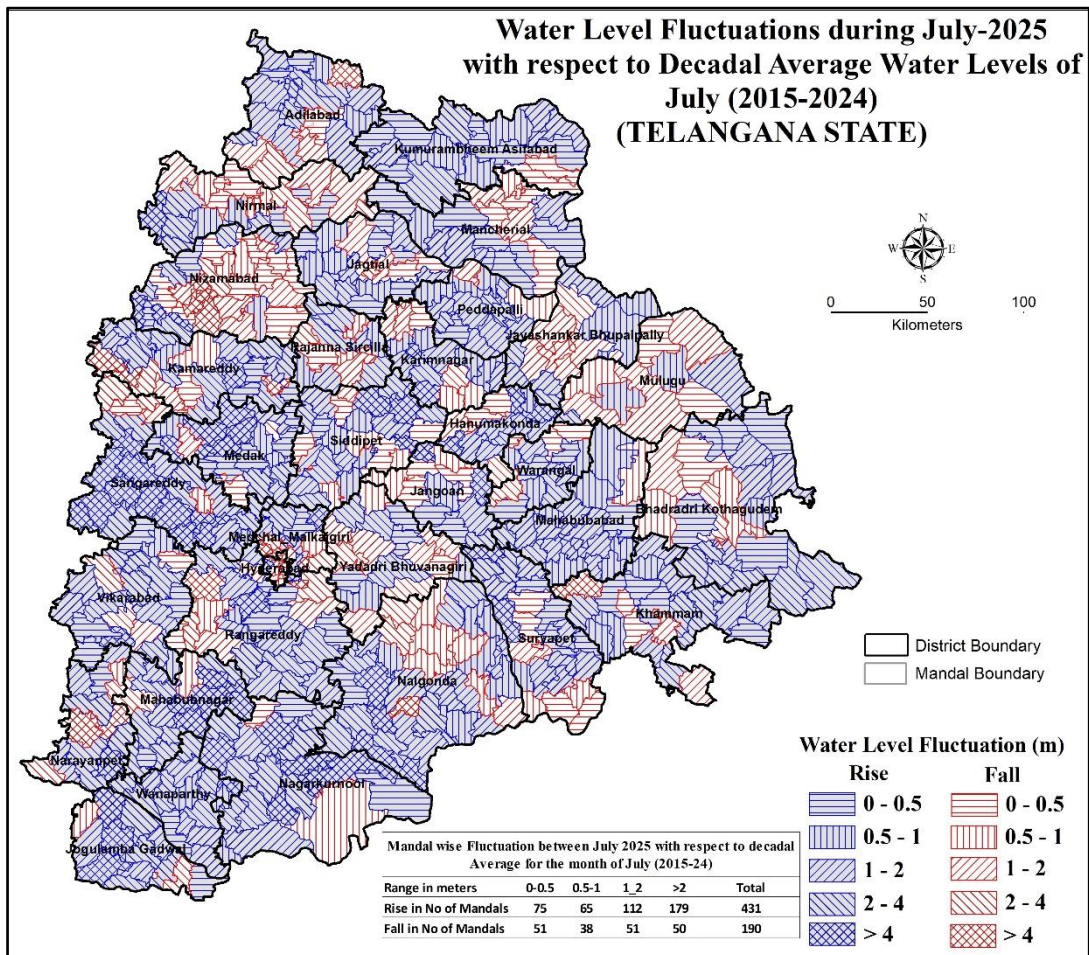
## 7. WATER LEVEL FLUCTUATION DURING JULY-2025 WITH REFERENCE TO DECADEAL MEAN OF JULY (2015-2024)

Water level fluctuation during July-2025 with reference to decadal mean of July (2015-2024) is presented in **Annexure-VI**. The analysis of 931 wells shows that water levels have shown rise in 613 wells (66%) and a fall in 225 wells (24%) (**Fig.14**).

- The minimum and maximum rise in water level of negligible is recorded at Mandamarri village and mandal of Mancherial district and 22.84 m is recorded at Ashwaraopet village and mandal of Kothagudem district.
- The minimum and maximum fall in water level of 0.04m is recorded at Devaruppala village & Mandal of Jangaon district and 22.99 m at Kangti village & mandal of Sangareddy district.
- More than > 4 m rise in water levels is observed mostly in western parts of Nirmal, western parts of Nizamabad, eastern parts of Kamareddy, eastern parts of Siddipet, Peddapally, Karimnagar, Hanumakonda, north-western parts of Suryapet, South western parts of Nalgonda, Narayanpet, Mahabubnagar, Medak and Vikarabad, central & northern parts of Rangareddy, Nagarkurnool & Gadwal and South western parts of Sangareddy districts etc.,
- More than > 4 m fall is observed in 46 piezometers.
- Water levels during July-2025 month, when compared with Decadal average of July (2015-2024) levels, it is observed that, out of 621 mandals, rise in the range of negligible to 22.84 m is observed in 431 mandals (75%) and fall in the range of 0.04 to 22.99 m in 190 mandals (25%) (Fig1).
- The rise (compared to decadal Average of July (2015-2024)) up to 0.5 m is observed in 75 mandals, 0.5-1.0 m in 65 mandals, 1-2 m in 112 mandals and > 2 m in 179 mandals covering central parts of Adilabad, south western parts Nirmal and Asifabad, western parts of Kamareddy, western parts of Nizamabad, western & south-central parts of Peddapally, and Siddipet, except central & western parts of entire Sangareddy, northern part of Medak, north, south-eastern parts of Jangaon, Warangal, Hanumakonda, Mahabubabad, and Mahabubabagr, except central & northern parts of entire Suryapet, South-western and eastern parts of Nalgonda, central & north-western parts of Nagarkurnool, south-central and northern parts of Gadwal, north-eastern and western parts of Vikarabad, northern parts of Rangareddy, southern parts of Narayanpet and Bhadradi Kothagudem districts.
- The fall (compared to decadal Average of July (2015-2024)) up to 0.5 m is observed in 51 mandals, 0.5-1 m in 38 mandals, 1-2 m in 51 mandals and > 2 m in 50 mandals in southern parts of Adilabad, south-central parts of Nizamabad, south western and eastern parts of Kamareddy and Medak, central parts of Jagityal, south-eastern parts of Asifabad, north-eastern parts of Bhupalapilly, Mahabubabad, northern parts of Vikarabad, central parts of Nalgonda, Medak, Medchal & Hyderabad, western parts Yadadri and northern parts of Bhadradi Kothagudem, and western Narayanpet and Mahabubnagar, southern parts of Nagakurnool districts.



**Fig.14: -**Percentage of Wells showing rise/fall during July-2025 wrt to decadal mean of July (2015-2024).



**Fig.15: -**Water Level Fluctuations during July-2025 w.r.t to Decadal average of July (2015-2024).

## **8. CHANGE IN GROUND WATER STORAGE (DYNAMIC) DURING JULY-2025 WITH RESPECT TO JULY-2024**

The dynamic groundwater resource quantification based on the change in storage is calculated based on the standard methodology. Initially, the computation is done aquifer wise and summarized for entire State.

Change in storage = Area (formation wise) x fluctuation (m) (formation wise) x Specific yield (%) (formation wise). Based on the estimations, the dynamic change(rise) in groundwater storage during the season (up to July-2025) there is estimated at 170 TMC storage in comparison with May-2025 water levels (up to July-2025). Aproximately a net recharge of 110TMC is estimated during July-2025 compared to June-2025.

## **9. DEEP WATERLEVELS**

Out of 612 mandals, 94 mandals are showing deep water levels (>20m) (covering 125 Piezometers) and out of these 94 mandals, 59 mandals are showing further declining in water levels (covering 73 piezometers) mostly in Bhadradi, Bhupalpally, Jogulamba(Gadwal), Kamareddy, Karimnagar, Mahabubnagar, Medak, Medchal, Mulugu, Nalgonda, Nizamabad, Peddapally, Rangareddy, Sangareddy, Siddipet, Sircilla, Suryapet, Vikarabad and Yadadri districts and in comparison with July-2024 water levels (**Table-**The maximum fall (30.45m) is observed at Neradigonda mandal of Bhadradi, Bhupalpally, Kamareddy, Khammam, Mahabubnagar, Medak, Medchal, Nagarkurnool, Narayanpet, Nirmal, Nizamabad, Rangareddy, Sangareddy, Siddipet, Vikarabad and Yadadri districts) when compared to July-2024 water levels. It is observed that these deepwater level mandals received normal rainfall up to July-2025 during this water year.

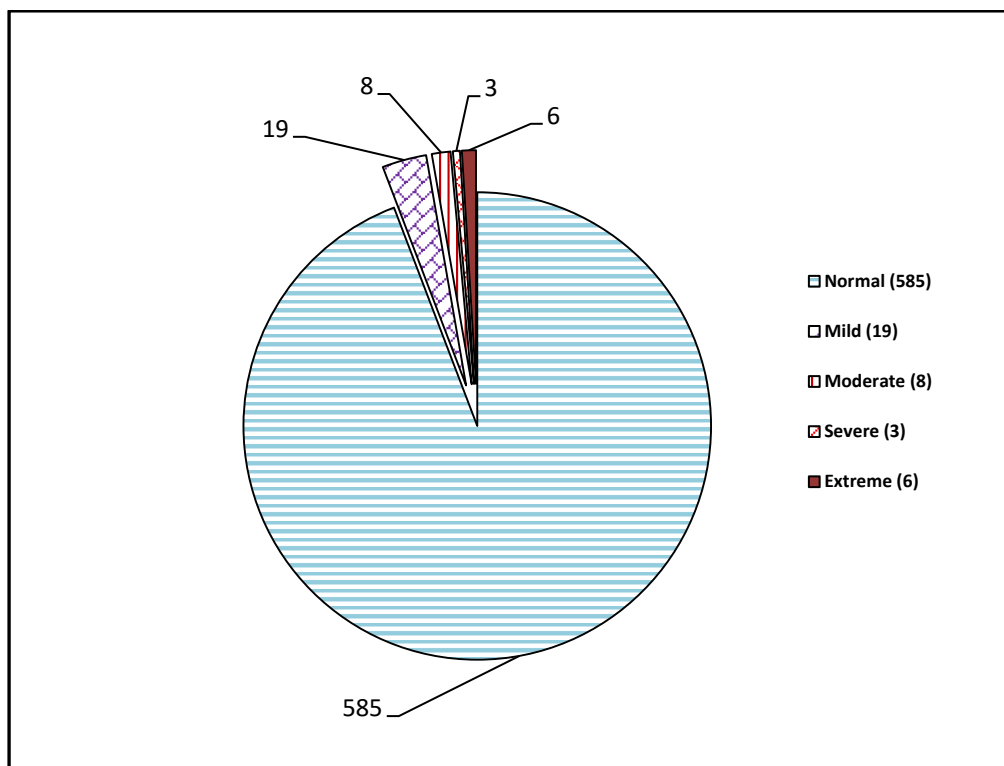
## 10.MANDALWISE GROUND WATER DROUGHT INDEX (GWDI) FOR THE MONTH JULY-2025

Mandal wise Ground Water Drought Index (GWDI) is calculated based on the following standard methodology prescribed by Govt. of India (CGWB). The ground water level data for the month of July for the last 11 years (2014 to 2024) from 1771 network stations (pzs) of State Ground Water Department (GWD) is used in calculation of drought index.

$$\text{GWDI (July-2025)} = \frac{[\text{Average water level during July (i.e., last 10 yrs (2015-2024) (m) - Observed water level during current month ( July-25) (m)]}{\text{Maximum observed water level depth for July (in the last 10 yrs-2015-24) (m)}}$$

GWDI	Category	No of Mandals
> -0.15	Normal	585
-0.16 to -0.30	Mild	19
-0.31 to -0.45	Moderate	08
-0.46 to -0.60	Severe	03
<-0.60	Extreme	06
	<b>Total</b>	<b>621</b>

Accordingly, during month of July-2025, out of 621 mandals, 585 mandals (94%) falls under normal category, 19 mandals falls under mild category, 08 mandals falls under moderate, 03 mandal is falling in severe and 06 mandals are falls in Extreme category (i.e., Bachupally & Kukatpally mandal of Medchal\_Malkajgiri, Saidabad mandal of Hyderabad, Utkoor mandal of Narayanpet, Nizamabad south mandal & Peddakodpagal mandal of Kamareddy district) (**Fig.16**).



**Fig.16:** - Ground Water Drought Index for the month of July-2025, Telangana State.

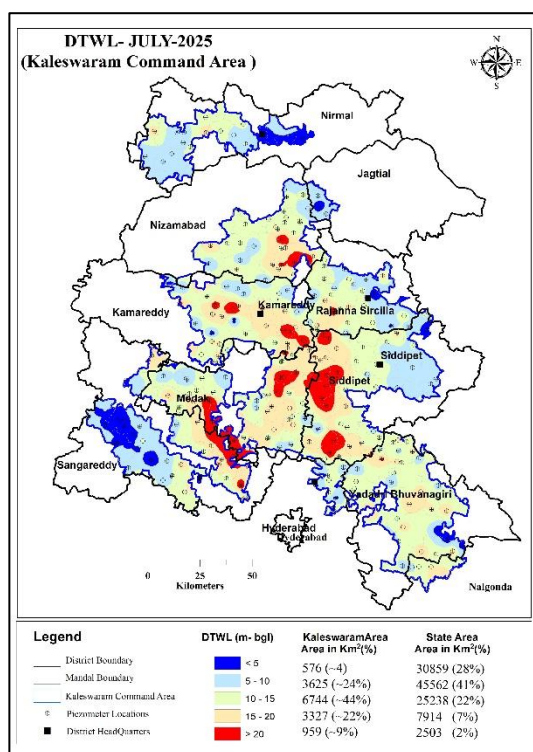
## 11. GROUNDWATER SCENARIO IN KALEHSWARAM LIFT IRRIGATION PROJECT AREA (KLIP)

### Status during July-2025, in comparison with July-2024

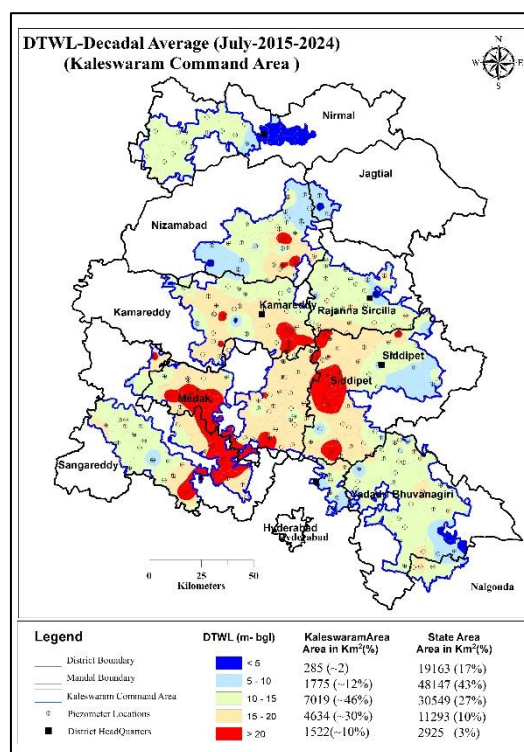
- During July-2025, average ground water levels in the project area is **12.09** mbgl where as it was **12.29** mbgl during July-2024.
- During the July-2025, ~28% of project area (4,201 Km<sup>2</sup>) is occupied by shallow water levels (< 5 and 5-10 meter below ground level ), whereas during the same month of July-2024 it occupied ~29% area (4,432 Km<sup>2</sup>) (**Fig.17**).
- Water levels in the range of 10-15, 15-20 and >20m bgl occupied ~44 %, ~22 % and ~9 % of area during July, 2025 and during July, 2024 they occupied ~44 %, ~20 % and 7 % of area respectively and thus deep-water level areas (15-20 & > 20m bgl) increased by ~4%.
- More improvement in ground water levels during July-2025 as compared to all years is noticed in south-eastern parts of Nizamabad, north and eastern part of Kamareddy, western part of Jagityal, entire Rajanna Sircilla, central and eastern Siddipet and most of Bhongiri districts.

### Status during July-2025 in comparison with Decadal of July (2015-24)

- During July-2025 shallow water levels (< 10 mbgl) occupied 28% area as compared to ~14% during decadal July (2015-24) (**Fig.18**).
- Deep water levels area i.e., 15-20 m and >20 m decreased from 22% to 30% and from 9% to 10% respectively during July-2025 as compared to decadal average water levels of decadal for the month of July (2015-24).



**Fig.17:** Depth to water levels, July-2025, KLIP.



**Fig.18:** Decadal water levels, July (2015-24), KLIP.

## 12. CONCLUSION and RECOMMENDATIONS

The analysis of depth to water level data reveals that average groundwater level in the State during July-2025 is **8.37** m bgl. During July-2025 month, water levels in the range of 5-10 m bgl are more predominant & covering ~41% of State area. Deep water levels (>20 m bgl) covers less than 2% of State area and 73 Piezometers from 59 mandals are showing further decline in water levels as compared to July-2024. An average rise in water level of 1.08m is observed during July-2025 as compared to last decadal average of July (2015-24) and out of 621 mandals, rise in the range from negligible to 22.84 m is observed in 75 % mandals and fall in the range 0.04 to 22.99 m is observed in 25% mandals.

In Kaleshwaram lift irrigation project (KLIP) command area, <10 m bgl water levels increased by ~231km<sup>2</sup> during July-2025 (4,201Km<sup>2</sup>) as compared to July-2024 (4,432Km<sup>2</sup>) and deep-water levels area increased by 4% during the same period. During July-2025 as compared to decadal average water levels of July (2015-24) deep water levels area (>15 m) reduced by ~9% in Kaleshwaram lift irrigation project.

Dynamic change in ground water storage during the month is estimated at 170TMC storage in comparison with July-2024 water levels (up to July-2025). a net recharge of 110TMC is estimated during July-2025 compared to May-2025.

To sustain these precious groundwater resources, both supply side measures like ARS, conservation, augmentation and demand side measures like Drip/Sprinkler irrigation methods and change in agronomic practices like changing from highly water consuming varieties of paddy to less water consuming varieties of ID crops (mainly in non-command areas and more particularly during Yasangi (rabi) season, direct seedling of and this will go a long way in sustaining this hidden resource. The other measures include laser leveling of land, increasing water efficiency which includes xeriscaping in major command areas of the State, conjunctive use of surface and ground water in canal command area and releasing of water (on/off method) from tail to head reaches should be implemented more particularly during rabi season. Renovation of traditional and other water bodies/tanks, reuse and recharge structures, watershed development and intensive afforestation in rural areas and urban waste water reuse, water fixture, reducing non-revenue water in urban areas are recommended along with behavioural changes which includes creating awareness, water pricing and social acceptability. Sustainable policies with incentives mechanism could lead more farmers to adopt technologies that aim to "irrigate the crop and not the land".

**"You Can't Manage What You Can't Measure"- Peter Drucker**

***"Thousands have lived without love, not one without water" - W.H. Auden***

***"Think You can't do anything without water-save it"***

**\*\*\* SAVE WATER, SAVE LIFE & SAVE EARTH \*\*\***

**Table-3: - Deep-Water Level Mandals (> 20 m bgl) During July-2025.**

S.No	Mandal	District	Village	Jun-24	Jun-25	Fluctuation During July-2025 To July-2024
1	Bachpalle	Medchal	Bachupally	--	77.06	--
2	Shankarpalle	Rangareddy	Prodatoor	--	69.37	--
3	Serilingampally	Rangareddy	Kondapur	--	57.32	--
4	Kukatpally	Medchal	Kukatpally Mro Office	47.57	46.94	0.63
5	Vikarabad	Vikarabad	Maildevarpally	--	44.25	--
6	Dammapeta	Bhadradi	Mandalapalli	42.58	42.58	0.00
7	Kangti	Sangareddy	Kangti-1	33.54	41.93	-8.39
8	Bomraspeta	Vikarabad	Gouraram	--	41.69	--
9	Kukatpally	Medchal	Kukatpally	--	41.40	--
10	Ibrahimpattanam	Rangareddy	Elimenadu	12.02	41.14	-29.12
11	Saroonnagar	Rangareddy	Bahadurguda	--	39.25	--
12	Kataram	Bhupalpally	Regulagudem	38.12	37.96	0.16
13	Jukkal	Kamareddy	Doangaon	--	37.65	--
14	Pedda Kodappal	Kamareddy	Godmagaon	26.35	36.29	-9.94
15	Hathanoora	Sangareddy	Sirpuram	16.87	35.45	-18.58
16	Marpalle	Vikarabad	Narsapur	8.77	34.30	-25.53
17	Kangti	Sangareddy	Kangti	26.82	34.06	-7.24
18	Chevella	Rangareddy	Bastepur	--	33.89	--
19	Tadwai	Kamareddy	Kankal	36.43	33.8	2.63
20	Marriguda	Nalgonda	Khudabhaksh Pally	25.33	33.53	-8.20
21	Sangareddy	Sangareddy	Sangareddy	34.19	33.43	0.76
22	Ibrahimpattanam	Rangareddy	Ibrahimpattanam	36.8	31.94	4.86
23	Kothagudem	Bhadradi	Kothagudem	31.70	31.82	-0.12
24	Sathupalle	Khammam	Prakashnagar	34.22	31.42	2.80
25	Malharrao	Bhupalpally	Rudraram	12.23	31.28	-19.05
26	Mulug	Siddipet	Mulugu	31.16	31.22	-0.06
27	Peddemul	Vikarabad	Nagulapalli	30.35	31.13	-0.78
28	Gummadidala	Sangareddy	Kanukunta	28.28	31.07	-2.79
29	Ibrahimpattanam	Rangareddy	Dandu Mailaram	19.36	30.88	-11.52
30	Bodhan	Nizamabad	Chinnamavandi	17.22	30.64	-13.42
31	Doultabad	Siddipet	Mubarasapur	27.58	30.64	-3.06
32	Narsingi	Medak	Narsingi	25.8	30.34	-4.54
33	Kulcharam	Medak	Rangampet	22.42	29.97	-7.55
34	Hathanoora	Sangareddy	Nasthipur	21.73	29.57	-7.84
35	Bheemgal	Nizamabad	Gongoppula	26.55	29.56	-3.01
36	Domakonda	Kamareddy	Anchanoor	28.77	29.47	-0.70
37	Narsapur	Medak	Kagazmaddur	18.54	28.88	-10.34
38	Bomraspeta	Vikarabad	Amsanpalle	29.58	28.58	1.00
39	Dubbak	Siddipet	Gambeerpur	28.16	28.5	-0.34
40	Doma	Vikarabad	Dirsanpally	--	28.13	--
41	Koilkonda	Mahabubnagar	Abhangapatnam	18.46	27.97	-9.51
42	Bhiknur	Kamareddy	Mallupally	37.85	26.96	10.89
43	Nizamabad_North	Nizamabad	Kanteswar	26.44	26.94	-0.50
44	Kaddampeddur	Nirmal	Chinnabellal	27.75	26.86	0.89
45	Shankarampet_R	Medak	Shankarampet-R	25.74	26.6	-0.86
46	Gummadidala	Sangareddy	Gummadidala	15.44	26.5	-11.06
47	Chandur	Nalgonda	Pullemla	22.88	26.25	-3.37
48	Narayanapur	Yadadi	S.Narayanapur	20.98	26.12	-5.14
49	Gandhari	Kamareddy	Chadmal	29.55	26.04	3.51
50	Patancheruvu	Sangareddy	Inole	19.59	25.77	-6.18
51	Narsapur	Medak	Chippalthurthy	19.91	25.55	-5.64
52	Yellareddypeta	Sircilla	Bandalingampalli	23.05	25.55	-2.50
53	Nawabpet	Mahabubnagar	Pomal	20.82	25.2	-4.38
54	Serilingampally	Rangareddy	Gopanpally	43.22	25.12	18.10
55	Pedda Kodappal	Kamareddy	Chillargi	21.18	24.71	-3.53
56	Damaracherla	Nalgonda	Wadapalli	21.25	24.65	-3.40
57	Nagar_Kurnool	Nagarkurnool	Nagarkurnool	24.78	24.53	0.25
58	Sirkonda	Nizamabad	Sirikonda	25.40	24.48	0.92
59	Yelal	Vikarabad	Devanoor	26.78	24.23	2.55
60	Thirumalagiri	Suryapet	Thatipamula	19.96	24.2	-4.24
61	Doultabad	Siddipet	Dommat	22.63	23.89	-1.26
62	Kukatpally	Medchal	Kukatpally 1	22.12	23.75	-1.63
63	Malkajgiri	Medchal	Malkajgiri	23.70	23.73	-0.03

S.No	Mandal	District	Village	Jun-24	Jun-25	Fluctuation During July-2025 To July-2024
64	Bibinagar	Yadadri	Bibinagar	18.93	23.58	-4.65
65	Mulug	Mulugu	Abbapur	7.82	23.51	-15.69
66	Gandhari	Kamareddy	Gurjal	31.59	23.36	8.23
67	Chandrugonda	Bhadradi	Maddukuru	22.74	23.31	-0.57
68	Jilled Chowdergudem	Rangareddy	Thummalapally	24.50	23.2	1.30
69	Kothur	Rangareddy	Penjerla	19.89	23	-3.11
70	Pinapaka	Bhadradi	Janampeta	29.66	22.94	6.72
71	Mirdoddi	Siddipet	Mirdoddi	20.51	22.88	-2.37
72	Gandhari	Kamareddy	Sarvapor	23.8	22.85	0.95
73	Rayapole	Siddipet	Raipole	21.55	22.85	-1.30
74	Sirkonda	Nizamabad	Cheemanpally	--	22.85	--
75	Bibipet	Kamareddy	Bibipet	22.08	22.77	-0.69
76	Peddavura	Nalgonda	Vijayapuri North	19.6	22.71	-3.11
77	Manthani	Peddapally	Eglaspur	18.66	22.68	-4.02
78	Yellareddy	Kamareddy	Yellareddy	17.68	22.65	-4.97
79	Yellareddy	Kamareddy	Yellareddy	17.68	22.65	-4.97
80	Medipally	Medchal	Chengicharla Sub Station	19.89	22.51	-2.62
81	Akbarpet-Bhoompally	Siddipet	Jangapally	17.62	22.38	-4.76
82	Gambhiraopeta	Sircilla	Kothapally	21.6	22.32	-0.72
83	Undavelli	Jogulamba(Gadwal)	Pullur	20.97	22.26	-1.29
84	Gangadhara	Karimnagar	Gangadhara	14.42	22.2	-7.78
85	Turkapalle_M	Yadadri	Konapur	22.39	22.16	0.23
86	Hanwada	Mahabubnagar	Vepur	28.61	22.09	6.52
87	Amrabad	Nagarkurnool	Vatverlapally	25.5	22.09	3.41
88	Amrabad	Nagarkurnool	Vatverlapally	25.50	22.09	3.41
89	Chilipched	Medak	Chilipade	--	21.98	--
90	Chilipched	Medak	Chilipched	17.14	21.98	-4.84
91	Jagadevpur	Siddipet	Dharmaram	20.20	21.83	-1.63
92	Manchal	Rangareddy	Bodakonda	21.24	21.7	-0.46
93	Kalher	Sangareddy	Meerkhanpally	14.07	21.63	-7.56
94	Regode	Medak	Gajwada	21.86	21.62	0.24
95	Kaloor_Timmanadoddi	Jogulamba(Gadwal)	Nandinne	17.46	21.38	-3.92
96	Sirkonda	Nizamabad	Gadkole	26.65	21.31	5.34
97	Quthbullapur	Medchal	Jeeditmetla	--	21.09	--
98	Alladurg	Medak	Alladurg	17.46	20.98	-3.52
99	Aswaraopeta	Bhadradi	Aswaraopet (D)	--	20.93	--
100	Shankarpalle	Rangareddy	Shankarpalli	16.63	20.93	-4.30
101	Padra	Nagarkurnool	Ippalapally	25.40	20.93	4.47
102	Dhanwada	Narayanpet	Kondapur	22.75	20.9	1.85
103	Kotepally	Vikarabad	Kotepalli	16.57	20.8	-4.23
104	Bheemgal	Nizamabad	Thallapally	19.19	20.79	-1.60
105	Hathanoora	Sangareddy	Borapatla	21.22	20.75	0.47
106	Nizamsagar	Kamareddy	Velganoor	19.6	20.72	-1.12
107	Mulug	Mulugu	Jakkaram(D)	6.56	20.69	-14.13
108	Kamareddy	Kamareddy	Adloor	19.61	20.65	-1.04
109	Mugpal	Nizamabad	Mugpal	22.22	20.65	1.57
110	Akbarpet-Bhoompally	Siddipet	Pothireddypet	21.4	20.59	0.81
111	Tekmal	Medak	Dhannaram	21.83	20.57	1.26
112	Ramayampet	Medak	Dharmaram	26.84	20.51	6.33
113	Bodhan	Nizamabad	Sangam	18.90	20.47	-1.57
114	Dubbak	Siddipet	Peddacheekode	20.66	20.46	0.20
115	Nawabpet	Vikarabad	Madireddy Palli	24.30	20.32	3.98
116	Farooqnagar	Rangareddy	Shadnagar	22.64	20.28	2.36
117	Lingampet	Kamareddy	Mothe	37.80	20.25	17.55
118	Bichkunda	Kamareddy	Pd Dadgi	12.06	20.2	-8.14
119	Domakonda	Kamareddy	Domakonda	19.52	20.17	-0.65
120	Narketpalle	Nalgonda	Cheruvugattu	10.41	20.12	-9.71
121	Chinnakodur	Siddipet	Allipur	12.21	20.05	-7.84
122	Dhanwada	Narayanpet	Dhanwada	21.15	20.05	1.10
123	Kuntala	Nirmal	Kallur	20.16	20.03	0.13
124	Nizampet	Medak	Naskal	18.09	20	-1.91
125	Kalher	Sangareddy	Fathepoor	18.22	20	-1.78

\* Including Newly drilled piezometers under NHP

## COMPARISON OF AVERAGE DEPTH TO GROUND WATER LEVELS AND RAINFALL OF JULY-2025 TO DECADAL, ANNUAL AND SEASONAL.

S.No.	DISTRICT	Rainfall in mm. (2025-26 water year)		Rainfall Deviation with Normal (%) (upto July-2025)	GROUND WATER LEVEL in m.bgl				Water Level in comparison with Decadal, Annual and seasonal.		
		Normal upto July-2025	Actual upto July-2025		Average depth to Water Level				Decadal	Annual	Seasonal
					Decadal	Annual July-2024	Seasonal May-2025	Actual July-2025			
1	ADILABAD	533	490	-8	5.06	3.93	11.84	4.00	1.06	-0.07	7.84
2	BHADRADRI	481	486	1	7.58	6.73	10.13	6.79	0.79	-0.06	3.34
3	BHUPALPALLY	476	396	-17	9.78	8.03	10.98	9.30	0.48	-1.27	1.68
4	HANUMAKONDA	406	375	-8	6.01	4.80	8.55	6.59	-0.58	-1.79	1.96
5	HYDERABAD	278	256	-8	7.01	10.74	9.25	8.03	-1.02	2.71	1.22
6	JAGITYAL	438	332	-24	5.43	3.96	5.68	4.49	0.94	-0.53	1.19
7	JANGAON	325	246	-24	10.37	7.87	10.02	10.14	0.23	-2.27	-0.12
8	JOGULAMBA(GADWAL)	196	169	-14	9.27	7.32	7.14	6.34	2.93	0.98	0.80
9	KAMAREDDY	389	382	-2	13.00	13.80	14.60	12.90	0.10	0.90	1.70
10	KARIMNAGAR	363	372	3	8.41	5.74	8.78	7.48	0.93	-1.74	1.30
11	KHAMMAM	373	378	2	5.31	4.59	5.89	3.87	1.44	0.72	2.02
12	KUMURAM BHEEM	543	587	8	6.47	6.31	9.53	5.91	0.56	0.40	3.62
13	MAHABUBABAD	390	385	-1	5.57	3.97	7.50	4.44	1.13	-0.47	3.06
14	MAHABUBNAGAR	236	315	33	13.08	10.56	11.59	9.96	3.12	0.60	1.63
15	MANCHERIAL	474	335	-29	6.27	5.54	7.23	6.45	-0.18	-0.91	0.78
16	MEDAK	319	281	-12	17.41	14.19	15.37	14.16	3.25	0.03	1.21
17	MEDCHAL	273	236	-14	11.27	11.99	13.98	12.03	-0.76	-0.04	1.95
18	MULUGU	575	555	-4	6.77	3.94	9.43	6.92	-0.15	-2.98	2.51
19	NAGARKURNOOL	202	264	31	11.15	9.42	7.80	7.46	3.69	1.96	0.34
20	NALGONDA	201	191	-5	10.81	9.58	8.51	8.85	1.96	0.73	-0.34
21	NARAYANPET	229	251	10	10.09	8.68	8.52	6.93	3.16	1.75	1.59
22	NIRMAL	477	376	-21	8.77	7.10	10.76	8.23	0.54	-1.13	2.53
23	NIZAMABAD	439	355	-19	11.36	10.55	12.41	11.76	-0.40	-1.21	0.65
24	PEDDAPALLY	444	327	-26	7.44	3.52	6.63	5.28	2.16	-1.76	1.35
25	RANGAREDDY	242	296	22	13.32	13.08	15.08	11.74	1.58	1.34	3.34
26	SANGAREDDY	312	259	-17	16.30	11.90	14.81	12.35	3.95	-0.45	2.46
27	SIDDIPET	290	348	20	13.63	12.29	12.63	11.89	1.74	0.40	0.74
28	SIRCILLA	353	341	-3	11.32	10.29	11.01	9.35	1.97	0.94	1.66
29	SURYAPET	258	220	-15	8.06	7.20	6.69	7.32	0.74	-0.12	-0.63
30	VIKARABAD	299	322	8	11.65	12.61	15.44	12.47	-0.82	0.14	2.97
31	WANAPARTHY	226	236	5	6.95	6.50	6.31	5.32	1.63	1.18	0.99
32	WARANGAL	425	427	0	6.33	4.50	6.14	5.66	0.67	-1.16	0.48
33	YADADRI	236	229	-3	10.77	10.90	11.98	11.87	-1.10	-0.97	0.11
	<b>TELANGANA</b>	358	342	-4	9.45	8.25	10.07	8.37	1.08	-0.13	1.69



ANNEXURE-II					
NORMAL AND ACTUALL CUMULATIVE RAINFALL					
S.No.	District	Mandal	Cumulative total		
			from 01-06-2025 to 31-07-2025		
			Normal	Actual	% Dev
1	Jangaon	Ganpur_stn	438.5	205.7	-53
2	Sangareddy	Jinnaram	339.4	163.8	-52
3	Mancherial	Chennur	493.9	243.8	-51
4	Medak	Manoharabad	273	138.4	-49
5	Sangareddy	Kalher	318.9	162.1	-49
6	Suryapet	Chinthala palem	219.5	117	-47
7	Suryapet	Huzur nagar	257.1	136.6	-47
8	Jangaon	Raghunathpalle	337.8	186.6	-45
9	Suryapet	Neredcherla	233.8	131.1	-44
10	Jangaon	Palakurthi	346	194.5	-44
11	Mancherial	Kotapalle	476.8	265.4	-44
12	Mancherial	Luxettipet	448.5	249.7	-44
13	Adilabad	Sonala	521.9	292.4	-44
14	Mancherial	Vemanpalle	466.1	265.6	-43
15	Nalgonda	Madugulapally	214.8	124.6	-42
16	Peddapalli	Ramagiri	442	255.9	-42
17	Peddapalli	Palakurthy	440	255.5	-42
18	Adilabad	Neradigonda	523.1	304.8	-42
19	Nalgonda	Kethepalle	256.5	151.6	-41
20	Rajanna Sircilla	Rudrangi	394.6	234.2	-41
21	Nizamabad	Mupkal	428.9	253.5	-41
22	Nalgonda	Vemulapalle	218.2	131.8	-40
23	Nizamabad	Yergatla	442.2	264.1	-40
24	Peddapalli	Manthani	495	297.6	-40
25	Nalgonda	Nampalle	167.5	102.6	-39
26	Suryapet	Thirumalagiri	327.6	201.2	-39
27	Nalgonda	Nalgonda	251.4	153.8	-39
28	Nizamabad	Vailpur	443.7	270.8	-39
29	Mancherial	Bheemaram	450.6	275.9	-39
30	Medchal Malkajgiri	Medipally	280.8	174.7	-38
31	Nirmal	Soan	473.7	296	-38
32	Nirmal	Basar	465.9	289.2	-38
33	Nizamabad	Nizamabad_Rural	459.9	286	-38
34	Jagtial	Metpalle	488.1	302.7	-38
35	Peddapalli	Ramagundam	457.1	281.9	-38
36	Wanaparthy	Amarchinta	223.4	140.6	-37
37	Yadadri Bhuvanagiri	Gundala	274.4	172.1	-37
38	Yadadri Bhuvanagiri	Bhongiri	279.8	176.2	-37
39	Sangareddy	Sangareddy	303.9	192	-37
40	Sangareddy	Zahirabad	334.3	211.4	-37

ANNEXURE-II					
NORMAL AND ACTUAL CUMULATIVE RAINFALL					
S.No.	District	Mandal	Cumulative total		
			from 01-06-2025 to 31-07-2025		
			Normal	Actual	% Dev
41	Nizamabad	Mendora	452.3	284.8	-37
42	Peddapalli	Peddapalle	455.4	286.2	-37
43	Adilabad	Boath	521.9	329.1	-37
44	Vikarabad	Marpalle	277.6	177	-36
45	Jayashankar Bhupalpally	Mahadevpur	541.9	345.5	-36
46	Nalgonda	Chandur	240.1	155.5	-35
47	Sangareddy	Gummadidala	338.7	219.1	-35
48	Vikarabad	Bantwaram	314.5	203.7	-35
49	Jayashankar Bhupalpally	Kothapallygori	457.3	295.1	-35
50	Nizamabad	Nizamabad_North	458.8	296.2	-35
51	Jagtial	Velgatoor	436.5	285	-35
52	Peddapalli	Antargoan	447.3	288.8	-35
53	Mancherial	Nennal	492.5	319.3	-35
54	Jagtial	Buggaram	422.6	277.3	-34
55	Adilabad	Gadiguda	518.4	343.9	-34
56	Jogulamba Gadwal	Yerravalli	213	142	-33
57	Nizamabad	Mortad	444.3	298.5	-33
58	Nirmal	Tanur	451.5	302.6	-33
59	Mancherial	Mandarri	465.9	313.9	-33
60	Nirmal	Kaddampeddur	507.2	339.4	-33
61	Medak	Masaipet	312.8	213.5	-32
62	Jogulamba Gadwal	Manopad	189.3	129.2	-32
63	Sangareddy	Patancheruvu	301.4	205	-32
64	Warangal	Raiparthy	347.6	236.7	-32
65	Kamareddy	Pitlam	411.1	279.3	-32
66	Sangareddy	Narayankhed	339.1	231.6	-32
67	Peddapalli	Dharmaram	441.9	300.2	-32
68	Nirmal	Dilawarpur	506.6	345.4	-32
69	Sangareddy	Kandi	292.9	201.8	-31
70	Sangareddy	Nizampet	329.9	228.9	-31
71	Medchal Malkajgiri	Gandimaisamma Dundigal	306.4	212.8	-31
72	Karimnagar	Gangadhara	353.5	243.7	-31
73	Mancherial	Hajipur	489.2	336.3	-31
74	Mancherial	Dandepalle	461.1	316.8	-31
75	Mancherial	Mancherial	482.2	332	-31
76	Mancherial	Naspur	486.8	336.8	-31
77	Mulugu	Kannaigudem	583	401.5	-31
78	Sangareddy	Sadasivpet	283.1	198.8	-30
79	Wanaparthy	Atmakur	258.8	181.9	-30

ANNEXURE-II					
NORMAL AND ACTUAL CUMULATIVE RAINFALL					
S.No.	District	Mandal	Cumulative total		
			from 01-06-2025 to 31-07-2025		
			Normal	Actual	% Dev
80	Suryapet	Suryapet	285.3	200.5	-30
81	Kamareddy	Pedda Kodappal	385.6	271.7	-30
82	Jagtial	Gollapalle	425.6	296.4	-30
83	Jagtial	Kathlapur	475.5	331.9	-30
84	Mulugu	Mulug	534.8	377	-30
85	Nalgonda	Kangal	192.9	137.3	-29
86	Nizamabad	Armur	450.1	321	-29
87	Jagtial	Jagtial	480.1	343	-29
88	Nirmal	Khanapur	481.7	344.3	-29
89	Jogulamba Gadwal	Itikyala	213	152.7	-28
90	Medchal Malkajgiri	Ghatkesar	290.3	209.2	-28
91	Siddipet	Gajwel	284.7	203.7	-28
92	Nizamabad	Aloor	454.7	329.2	-28
93	Nizamabad	Balkonda	446	320.6	-28
94	Nirmal	Dastuarabad	485.3	350.6	-28
95	Jagtial	Endapalli	437.1	313.2	-28
96	Medchal Malkajgiri	Balanagar	300.5	218.4	-27
97	Hyderabad	Asifnagar	282.4	204.8	-27
98	Nalgonda	Miryalaguda	227.3	164.8	-27
99	Suryapet	Nagaram	309.7	227.4	-27
100	Medak	Papannapet	320.5	233.3	-27
101	Mahabubabad	Thorrur	366.9	267.9	-27
102	Hanumakonda	Hasanparthy	407.9	298	-27
103	Kamareddy	Nizamsagar	394.2	288.5	-27
104	Suryapet	Maddirala	284.2	207.2	-27
105	Nirmal	Kubeer	472.6	345.6	-27
106	Mancherla	Jaipur	474.7	344.9	-27
107	Ranga Reddy	Gandipet	274.4	201.7	-26
108	Nalgonda	Anumula_Haliya	192	141.9	-26
109	Nizamabad	Nizamabad_South	463.6	343.4	-26
110	Karimnagar	Ramadugu	338.9	250.8	-26
111	Nizamabad	Nandipet	410.7	304.9	-26
112	Jagtial	Ibrahimpattanam	457.1	339.1	-26
113	Nirmal	Laxmanchanda	464.3	345.6	-26
114	Jagtial	Beerpur	471.4	351	-26
115	Jagtial	Dharmapuri	425.3	315.6	-26
116	Jagtial	Raikal	456.2	339.6	-26
117	Jangaon	Kodakandla	313.5	233.6	-25
118	Jogulamba Gadwal	Dharur	193.4	144.8	-25
119	Medak	Regode	349.7	262.1	-25

ANNEXURE-II					
NORMAL AND ACTUAL CUMULATIVE RAINFALL					
S.No.	District	Mandal	Cumulative total		
			from 01-06-2025 to 31-07-2025		
			Normal	Actual	% Dev
120	Jagtial	Malial	391.8	295.5	-25
121	Jangaon	Lingalaghanpur	288.1	216.5	-25
122	Peddapalli	Julapalle	408.9	306.1	-25
123	Nalgonda	Thripuraram	211.6	161	-24
124	Hanumakonda	Elkathurthi	382.8	292.8	-24
125	Sangareddy	Ameenapur	310.2	235.3	-24
126	Jangaon	Zaffergadh	329.9	249.3	-24
127	Nizamabad	Kotgiri	450.1	343	-24
128	Jayashankar Bhupalpally	Kataram	438.4	331.4	-24
129	Nirmal	Mudhole	472.4	360	-24
130	Jagtial	Koratla	435.3	330	-24
131	Mulugu	Wazeed	626.1	478.6	-24
132	Sangareddy	Munipalli	302.4	232.7	-23
133	Suryapet	Palakeedu	240.1	185.9	-23
134	Yadadri Bhuvanagiri	Bibinagar	246.5	190.4	-23
135	Medak	Shankarampet_R	339.6	260	-23
136	Hanumakonda	Inavole	356.9	275.4	-23
137	Sangareddy	Hathanoora	313.8	240.9	-23
138	Jagtial	Pegadapalle	433.3	332.6	-23
139	Medak	Shankarampet_A	329.8	253.9	-23
140	Bhadradi Kothagudem	Bhadrachalam	489.6	374.6	-23
141	Mahabubabad	Danthalapalle	350.1	270.8	-23
142	Peddapalli	Kamanpur	480.8	372.6	-23
143	Nirmal	Pembi	491.2	377.3	-23
144	Mancherial	Jannaram	511.5	391.7	-23
145	Komaram Bheem Asifabad	Sirpur_U	550.9	422.5	-23
146	Suryapet	Garidepalle	235.9	183.3	-22
147	Hyderabad	Tirumalgi	284.6	221.4	-22
148	Medchal Malkajgiri	Medchel	278.8	217.4	-22
149	Warangal	Khilla_Warangal	422.6	331.4	-22
150	Jayashankar Bhupalpally	Ghanapur_Mulug	448	347.6	-22
151	Nizamabad	Sirkonda	403.8	316.2	-22
152	Jagtial	Jagityal_Rural	469.7	367.4	-22
153	Yadadri Bhuvanagiri	Mootakondur	243.8	193.8	-21
154	Nalgonda	Thipparthi	193.5	152	-21
155	Hyderabad	Nampally	281.9	222.8	-21
156	Nagarkurnool	Pentlavelli	229.2	180.1	-21
157	Kamareddy	Jukkal	378.4	300.4	-21

ANNEXURE-II					
NORMAL AND ACTUALL CUMULATIVE RAINFALL					
S.No.	District	Mandal	Cumulative total		
			from 01-06-2025 to 31-07-2025		
			Normal	Actual	% Dev
158	Khammam	Chinthakani	355.4	280.5	-21
159	Khammam	Nelakondapalle	337.4	265.9	-21
160	Vikarabad	Kulkacharla	276.9	219.9	-21
161	Mahabubabad	Mahabubabad	414.1	327.3	-21
162	Wanaparthy	Srirangapur	219.7	174	-21
163	Sangareddy	Andhole	352.2	276.8	-21
164	Mancherial	Kasipet	445.2	349.5	-21
165	Komaram Bheem Asifabad	Dahegaon	591.4	467.4	-21
166	Nizamabad	Kammarpalle	416.9	329.1	-21
167	Nizamabad	Makloor	452.1	356.5	-21
168	Nagarkurnool	Padra	182	145.5	-20
169	Nalgonda	Gattuppal	208	166.1	-20
170	Wanaparthy	Chinnambavi	221.2	177.5	-20
171	Nizamabad	Mosra	445.8	357.2	-20
172	Jangaon	Tharigoppula	307.6	246	-20
173	Rajanna Sircilla	Sircilla	370.3	294.7	-20
174	Medak	Alladurg	342.8	274.1	-20
175	Nirmal	Bhainsa	476.6	382.2	-20
176	Peddapalli	Elgaid	439.3	353	-20
177	Karimnagar	Choppadandi	403.8	321.2	-20
178	Kamareddy	Yellareddy	423.3	340	-20
179	Sangareddy	Ramachandrapuram	285.7	232.1	-19
180	Yadadri Bhuvanagiri	Addagudur	263.6	214.4	-19
181	Hanumakonda	Damera	455.1	368.3	-19
182	Jogulamba Gadwal	Gadwal	234.6	190.6	-19
183	Nizamabad	Pothangal	448.9	362.8	-19
184	Yadadri Bhuvanagiri	Pochampalle	241.8	196.9	-19
185	Mancherial	Tandur	447.5	360.4	-19
186	Mancherial	Kannepalli	494.2	399.7	-19
187	Bhadradri Kothagudem	Dummugudem	584.3	470.9	-19
188	Adilabad	Utnur	592.9	477.7	-19
189	Mahabubabad	Peddavangara	318.8	260.3	-18
190	Suryapet	Chilkur	246.6	201.3	-18
191	Medak	Kowdipalle	316.5	258.3	-18
192	Nalgonda	Kattangoor	239.6	196.5	-18
193	Jagtial	Kodimial	364.6	297.4	-18
194	Mahabubabad	Kuravi	383.3	314.6	-18
195	Jayashankar Bhupalpally	Malharrao	427.8	349.1	-18

ANNEXURE-II					
NORMAL AND ACTUALL CUMULATIVE RAINFALL					
S.No.	District	Mandal	Cumulative total		
			from 01-06-2025 to 31-07-2025		
			Normal	Actual	% Dev
196	Komaram Bheem Asifabad	Jainoor	583.4	480	-18
197	Hyderabad	Ammerpet	287.9	238.5	-17
198	Nizamabad	Saloor	440.8	367.2	-17
199	Medak	Chilipched	317.4	263.6	-17
200	Mahabubnagar	Mahabubnagar_Rural	249.3	208	-17
201	Medak	Narsapur	338.8	281.3	-17
202	Siddipet	Kukunoorpally	273.5	227.3	-17
203	Rajanna Sircilla	Chandurthi	413	342.5	-17
204	Bhadradi Kothagudem	Pinapaka	536.1	442.3	-17
205	Mahabubabad	Nellikudur	369.9	307.4	-17
206	Adilabad	Mavala	518.7	432.1	-17
207	Sangareddy	Kondapur	240.7	202.3	-16
208	Hyderabad	Golkonda	275.8	231	-16
209	Jangaon	Bachannapeta	286.5	239.7	-16
210	Suryapet	Chivvemla	239.5	202	-16
211	Jayashankar Bhupalpally	Tekumatla	465.8	391.7	-16
212	Khammam	Khammam_Urban	367.1	307.6	-16
213	Sangareddy	Mogdampalle	346.1	289.4	-16
214	Mulugu	Tadvai	553.7	466.9	-16
215	Suryapet	Penpahad	233.6	198.9	-15
216	Hyderabad	Charminar	280	239.2	-15
217	Vikarabad	Vikarabad	348.1	294.9	-15
218	Jogulamba Gadwal	Ghattu	175.8	150.3	-15
219	Nalgonda	Saligouraram	252.9	216.2	-15
220	Vikarabad	Mominpet	316.1	268.7	-15
221	Suryapet	Jajireddigudem	293	249.9	-15
222	Nalgonda	Nakrekal	261	221.9	-15
223	Medak	Shivampet	279.2	238.4	-15
224	Jangaon	Chilpur	357.3	304.5	-15
225	Medak	Tekmal	307.9	261.6	-15
226	Nizamabad	Dichpalle	412.3	352.1	-15
227	Jangaon	Narmetta	315	268.5	-15
228	Bhadradi Kothagudem	Dammipeta	467.1	397.8	-15
229	Komaram Bheem Asifabad	Tiryani	470.3	398.9	-15
230	Jayashankar Bhupalpally	Mutharam_Mahadevpur	511	431.8	-15
231	Adilabad	Sirikonda	568.7	481.6	-15
232	Kamareddy	Madnur	376.4	324.5	-14
233	Medchal Malkajgiri	Muduchinthalapally	231.3	199.2	-14

ANNEXURE-II					
NORMAL AND ACTUALL CUMULATIVE RAINFALL					
S.No.	District	Mandal	Cumulative total		
			from 01-06-2025 to 31-07-2025		
			Normal	Actual	% Dev
234	Nizamabad	Bodhan	440.9	379.7	-14
235	Medchal Malkajgiri	Quthbullapur	293.4	251.6	-14
236	Mahabubabad	Chinnagudur	338.1	289.3	-14
237	Kamareddy	Bichkunda	392.1	337.8	-14
238	Khammam	Mudigonda	337.2	289.1	-14
239	Narayanpet	Narayanpet	256.4	219.3	-14
240	Jagtial	Bheemaram	405.7	349.9	-14
241	Kamareddy	Mohammadnagar	394.2	338.4	-14
242	Wanaparthy	Veepangandla	220.7	189.6	-14
243	Yadadri Bhuvanagiri	Mothkur	273.3	237.6	-13
244	Hyderabad	Bahadurpura	268.6	235	-13
245	Hyderabad	Saidabad	269.2	233	-13
246	Ranga Reddy	Hayathnagar	256.1	222	-13
247	Kamareddy	Naga_Reddipet	405.4	353.5	-13
248	Medchal Malkajgiri	Keesara	262.1	228	-13
249	Suryapet	Atmakur_S	266.5	230.7	-13
250	Jagtial	Medipalle	405.6	352.2	-13
251	Peddapalli	Sultanabad	449.2	393	-13
252	Warangal	Narsampet	484.2	419	-13
253	Bhadradi Kothagudem	Kothagudem	461	401.4	-13
254	Rajanna Sircilla	Boinpalle	332.6	288.2	-13
255	Hyderabad	Khairatabad	286.2	252.6	-12
256	Nalgonda	Nidamanur	208	182.7	-12
257	Hanumakonda	Dharmasagar	336.3	297.2	-12
258	Sangareddy	Kohir	296.4	261.1	-12
259	Mahabubabad	Seerole	365.6	321.5	-12
260	Mahabubabad	Narsimhulapet	325.4	285.9	-12
261	Nizamabad	Jakranpalle	401.2	351.8	-12
262	Hanumakonda	Shayampet	501.1	441.2	-12
263	Jayashankar Bhupalpally	Mogullapalle	456	400.6	-12
264	Hanumakonda	Nadikuda	465.2	411.1	-12
265	Nirmal	Nirmal_Rural	481	425	-12
266	Medchal Malkajgiri	Kukatpally	297.6	264	-11
267	Bhadradi Kothagudem	Yellandu	451.1	399.8	-11
268	Siddipet	Mirdoddi	294.7	262.5	-11
269	Hanumakonda	Khazipet	378.2	336.8	-11
270	Jangaon	Devaruppala	267.8	239.1	-11
271	Rajanna Sircilla	Vemulawada	388.5	347.7	-11
272	Vikarabad	Basheerabad	309.6	275.8	-11

ANNEXURE-II					
NORMAL AND ACTUALL CUMULATIVE RAINFALL					
S.No.	District	Mandal	Cumulative total		
			from 01-06-2025 to 31-07-2025		
			Normal	Actual	% Dev
273	Nirmal	Narsapur_G	474.8	422.2	-11
274	Jayashankar Bhupalpally	Chityal	461.6	411.5	-11
275	Mahabubabad	Inugurthy	379.2	336.2	-11
276	Bhadradi Kothagudem	Mulakalapalle	507.6	453.3	-11
277	Jogulamba Gadwal	Undavelli	204.8	183.6	-10
278	Suryapet	Ananthagiri	254.6	228.6	-10
279	Siddipet	Mulug	286.2	257.1	-10
280	Kamareddy	Banswada	463.4	419	-10
281	Medak	Nizampet	304.4	274.7	-10
282	Suryapet	Thungathurthi	310.5	280.6	-10
283	Nizamabad	Bheemgal	444.8	400.7	-10
284	Jayashankar Bhupalpally	Bhupalpalle	492.1	445.3	-10
285	Nirmal	Mamda	444.5	399.2	-10
286	Adilabad	Inderavelly	612.4	552.9	-10
287	Medak	Narsingi	323.2	295.3	-9
288	Sangareddy	Watpalle	334.8	304.8	-9
289	Nalgonda	Tirumalagiri_Sagar	180.3	164.3	-9
290	Rajanna Sircilla	Vemulawada_Rural	379.5	344.4	-9
291	Warangal	Parvathagiri	386.8	352.7	-9
292	Sangareddy	Sirgapor	338.6	308.5	-9
293	Yadadri Bhuvanagiri	Valigonda	252.8	231.3	-9
294	Nizamabad	Ranjal	460.8	420.9	-9
295	Rajanna Sircilla	Veernapalle	345.8	313.1	-9
296	Jayashankar Bhupalpally	Palmela	548.7	497.1	-9
297	Karimnagar	Jammikunta	398.7	363.2	-9
298	Mulugu	Venkatapur	520	470.9	-9
299	Bhadradi Kothagudem	Aswapuram	513.3	464.9	-9
300	Mancherial	Bellampalle	447.5	406.4	-9
301	Jagtial	Sarangapur	441.3	402.4	-9
302	Adilabad	Narnoor	539.7	490.9	-9
303	Yadadri Bhuvanagiri	Yadagirigutta	251.7	232.3	-8
304	Mahabubnagar	Chinna_Chintha_Kunta	216.9	198.5	-8
305	Sangareddy	Chowtakur	305.8	280.3	-8
306	Jogulamba Gadwal	Kaloor_Timmanadoddi	180.8	167	-8
307	Nirmal	Lokeswaram	434.8	400.2	-8
308	Nizamabad	Navipet	496.8	454.6	-8
309	Siddipet	Maddur	318.7	293.1	-8
310	Hanumakonda	Hanumakonda	419.6	387.8	-8

ANNEXURE-II					
NORMAL AND ACTUALL CUMULATIVE RAINFALL					
S.No.	District	Mandal	Cumulative total		
			from 01-06-2025 to 31-07-2025		
			Normal	Actual	% Dev
311	Nizamabad	Varni	452.2	416.2	-8
312	Nirmal	Kuntala	477.7	440.5	-8
313	Bhadradi Kothagudem	Laxmidivipalli	442.1	412.4	-7
314	Adilabad	Talamadugu	497.5	464.8	-7
315	Hyderabad	Shaikpet	281.9	265.4	-6
316	Medchal Malkajgiri	Alwal	254.4	238	-6
317	Wanaparthy	Pebbair	228.2	214.3	-6
318	Narayanpet	Dhanwada	250.3	235	-6
319	Wanaparthy	Pangal	202.3	190.6	-6
320	Peddapalli	Srirampur	439.6	415.2	-6
321	Bhadradi Kothagudem	Allapalli	463.1	434.5	-6
322	Peddapalli	Mutharam_Manthani	421.7	396.3	-6
323	Adilabad	Bhoraj	549.2	516	-6
324	Adilabad	Adilabad Rural	552.7	517.3	-6
325	Jogulamba Gadwal	Aiza	183	173.4	-5
326	Medchal Malkajgiri	Kapra	247.8	236.4	-5
327	Medak	Yeldurthy	307	292.8	-5
328	Khammam	Wyra	377.8	360.6	-5
329	Hanumakonda	Kamalapur	385.1	367.7	-5
330	Nalgonda	Munugode	239	227	-5
331	Siddipet	Cheriyal	277	264.5	-5
332	Nirmal	Sarangapur	490.9	464	-5
333	Siddipet	Rayapole	250.2	239.2	-4
334	Nalgonda	Narketpalle	235.5	226.7	-4
335	Rajanna Sircilla	Yellareddypeta	342.7	330.2	-4
336	Nizamabad	Dharpalle	402.2	384.4	-4
337	Narayanpet	Makthal	199.6	191.9	-4
338	Peddapalli	Odela	391.6	376.9	-4
339	Jagtial	Mallapur	426.1	409	-4
340	Jogulamba Gadwal	Waddepalle	183.1	177.7	-3
341	Nizamabad	Donkeshwar	407.9	394	-3
342	Hanumakonda	Parkal	479.6	464.7	-3
343	Sangareddy	Nalgidda	299.7	290.2	-3
344	Karimnagar	Ellandakunta	394.8	382.6	-3
345	Nizamabad	Mugpal	448.3	436	-3
346	Khammam	Sathupalle	439.2	428.2	-3
347	Bhadradi Kothagudem	Burgampadu	528	510.3	-3
348	Adilabad	Sathnala	536.7	519.2	-3
349	Jogulamba Gadwal	Rajoli	175.3	171	-2
350	Khammam	Kusumanchi	328.8	323	-2

ANNEXURE-II					
NORMAL AND ACTUALL CUMULATIVE RAINFALL					
S.No.	District	Mandal	Cumulative total		
			from 01-06-2025 to 31-07-2025		
			Normal	Actual	% Dev
351	Hyderabad	Himayatnagar	270	263.9	-2
352	Siddipet	Jagadevpur	267.1	262.2	-2
353	Medak	Havelighanpur	360.1	352.7	-2
354	Warangal	Sangem	422	413	-2
355	Bhadradi Kothagudem	Karakagudem	542.7	532.8	-2
356	Bhadradi Kothagudem	Gundala	463.1	452.4	-2
357	Bhadradi Kothagudem	Cherla	595.2	585.8	-2
358	Yadadri Bhuvanagiri	Atmakur_M	215.1	212.7	-1
359	Nalgonda	Neredugommu	149.2	147.3	-1
360	Nalgonda	Gurrampode	162.9	161.6	-1
361	Hyderabad	Secunderabad	283.7	279.6	-1
362	Ranga Reddy	Shankarpalle	276.9	273.5	-1
363	Medak	Medak	370.1	365.4	-1
364	Suryapet	Kodad	259.2	257.3	-1
365	Nizamabad	Yeda_Palle	428.6	425.2	-1
366	Karimnagar	Karimnagar (Rural-I)	373.8	368.5	-1
367	Warangal	Warangal	422.7	416.4	-1
368	Kamareddy	Gandhari	459.1	453.4	-1
369	Komaram Bheem Asifabad	Penchikalpet	570.1	566.5	-1
370	Suryapet	Noothankal	274.2	274.9	0
371	Yadadri Bhuvanagiri	Bommalamaram	216.8	216.7	0
372	Medchal Malkajgiri	Uppal	276.6	276.2	0
373	Hyderabad	Amberpet	269.5	268.4	0
374	Kamareddy	Bibipet	348.2	347.4	0
375	Kamareddy	Dongli	375.1	376.7	0
376	Kamareddy	Tadwai	397.2	396.6	0
377	Mahabubabad	Maripeda	346.5	345.2	0
378	Khammam	Penuballi	388.9	389.3	0
379	Vikarabad	Kotepally	320.6	321	0
380	Nagarkurnool	Kollapur	266.7	266.8	0
381	Nizamabad	Rudrur	431.3	432.1	0
382	Karimnagar	Gannervaram	316.8	317.8	0
383	Adilabad	Tamsi	495.3	495.6	0
384	Medchal Malkajgiri	Bachpalle	320.5	324.3	1
385	Siddipet	Wargal	272.6	275.9	1
386	Nagarkurnool	Charakonda	182	183.9	1
387	Ranga Reddy	Saroornagar	254.7	257.5	1
388	Warangal	Nallabelly	465.3	468.5	1
389	Kamareddy	Domakonda	349.3	351.4	1

ANNEXURE-II					
NORMAL AND ACTUAL CUMULATIVE RAINFALL					
S.No.	District	Mandal	Cumulative total		
			from 01-06-2025 to 31-07-2025		
			Normal	Actual	% Dev
390	Medak	Chegunta	317.3	321.4	1
391	Kamareddy	Lingampet	385.4	389.8	1
392	Kamareddy	Kamareddy	400.5	406.1	1
393	Khammam	Raghunadhapalem	358.3	362.7	1
394	Bhadradi Kothagudem	Chunchupally	449	454.7	1
395	Nirmal	Nirmal (U)	509	515.6	1
396	Adilabad	Adilabad Urban	534.9	541.6	1
397	Jogulamba Gadwal	Maldakal	190.8	195.3	2
398	Suryapet	Mellachervu	228.6	234	2
399	Jogulamba Gadwal	Alampur	217.9	222.9	2
400	Sangareddy	Manoor	304.7	309.5	2
401	Karimnagar	Veenavanka	369.2	376.6	2
402	Nizamabad	Indalwai	404.3	412.2	2
403	Warangal	Nekkonda	458.5	467.6	2
404	Narayanpet	Maganoor	222.5	226.8	2
405	Bhadradi Kothagudem	Manuguru	556	566	2
406	Narayanpet	Gundumal	236.6	242.7	3
407	Nizamabad	Chandur	445.3	458.2	3
408	Warangal	Geesugonda	418.6	429.8	3
409	Mulugu	Govindaraopet	545.7	561.2	3
410	Yadadri Bhuvanagiri	Alair	250.2	261.1	4
411	Medchal Malkajgiri	Shamirpet	197.1	205	4
412	Vikarabad	Peddemul	331.4	346.2	4
413	Khammam	Bonakal	337.6	350.7	4
414	Adilabad	Bheempoor	454.4	474.7	4
415	Ranga Reddy	Abdullapurmet	251.9	263.3	5
416	Khammam	Khammam_Rural	351.4	369	5
417	Khammam	Thirumalayapalem	329	345.2	5
418	Mahabubnagar	Hanwada	262.1	275	5
419	Adilabad	Bazarhathnoor	535.3	564.6	5
420	Nalgonda	Damaracherla	213.8	226.6	6
421	Khammam	Thallada	378.8	401.3	6
422	Narayanpet	Narva	214.7	226.7	6
423	Yadadri Bhuvanagiri	Ramannapeta	241.3	255.1	6
424	Khammam	Singareni	433.9	458.8	6
425	Wanaparthy	Madanapur	229.2	243.6	6
426	Karimnagar	Huzurabad	385	409.6	6
427	Kamareddy	Palwancha	353.5	376	6
428	Khammam	Enkuru	421.9	448	6
429	Sangareddy	Naykal	298.4	318.5	7

ANNEXURE-II					
NORMAL AND ACTUAL CUMULATIVE RAINFALL					
S.No.	District	Mandal	Cumulative total		
			from 01-06-2025 to 31-07-2025		
			Normal	Actual	% Dev
430	Medchal Malkajgiri	Malkajgiri	256.1	274.7	7
431	Wanaparthy	Wanaparthy	257	274.3	7
432	Narayanpet	Krishna	211.8	227.2	7
433	Nagarkurnool	Balmoor	187.3	200.8	7
434	Hanumakonda	Atmakur	464.6	496.5	7
435	Narayanpet	Kothapalle	206.1	221.4	7
436	Kamareddy	Nasurullabad	408.5	438.6	7
437	Sangareddy	Raikode	275.7	293.8	7
438	Mancherial	Bheemini	484	519.1	7
439	Suryapet	Mattampalle	177.7	192.5	8
440	Medak	Tupran	291.1	314.1	8
441	Kamareddy	Birkoor	397.4	431.1	8
442	Khammam	Yerrupalem	362	390.3	8
443	Jayashankar Bhupalpally	Regonda	457.3	492.5	8
444	Vikarabad	Kodangal	282.6	309.1	9
445	Medak	Kulcharam	297.3	324.3	9
446	Mahabubnagar	Koilkonda	226.4	246.5	9
447	Wanaparthy	Kothakota	222.2	241.1	9
448	Mahabubnagar	Gandeed	241.5	262.3	9
449	Kamareddy	Rajampet	374.2	406.8	9
450	Sangareddy	Kangti	355.2	389.8	10
451	Ranga Reddy	Nandigam	237.3	262.1	10
452	Mulugu	Mangapet	578.5	634.9	10
453	Hyderabad	Bandlaguda	264.7	294.7	11
454	Suryapet	Nadigudem	271.7	301	11
455	Khammam	Kamepalle	412.8	457	11
456	Ranga Reddy	Rajendranagar	279.2	309.3	11
457	Warangal	Duggondi	408.9	454.5	11
458	Mahabubnagar	Devarkadara	250.4	277.3	11
459	Bhadradri Kothagudem	Palawancha	478.8	530.9	11
460	Sangareddy	Jharasangam	295.9	332.4	12
461	Yadadri Bhuvanagiri	Rajapet	215.1	240.7	12
462	Ranga Reddy	Shamshabad	298.8	333.5	12
463	Mahabubabad	Ganagavaram	497.2	557	12
464	Mahabubabad	Kothaguda	517.7	582.3	12
465	Komaram Bheem Asifabad	Sirpur_T	561.3	626.7	12
466	Vikarabad	Nawabpet	281.7	319.1	13
467	Nagarkurnool	Kodair	220.2	249.9	13
468	Khammam	Konijerla	360.3	407.1	13

ANNEXURE-II					
NORMAL AND ACTUALL CUMULATIVE RAINFALL					
S.No.	District	Mandal	Cumulative total		
			from 01-06-2025 to 31-07-2025		
			Normal	Actual	% Dev
469	Mahabubabad	Kesamudram	394.4	445	13
470	Khammam	Kalluru	392	444.3	13
471	Bhadradi Kothagudem	Annapureddipalle	433.2	489.5	13
472	Komaram Bheem Asifabad	Lingapur	542.9	611.1	13
473	Adilabad	Jainad	546	616	13
474	Komaram Bheem Asifabad	Kouthala	598.2	676.1	13
475	Ranga Reddy	Jilled Chowdergudem	234.9	267	14
476	Karimnagar	Karimnagar (Rural-II)	377	431.4	14
477	Mahabubnagar	Mahabubnagar_Urban	283.4	321.9	14
478	Rajanna Sircilla	Gambhiraopeta	327.8	373.7	14
479	Bhadradi Kothagudem	Sujathanagar	431.5	493.7	14
480	Rajanna Sircilla	Konaraopeta	331	378.7	14
481	Rajanna Sircilla	Thangallapalle	376.8	430.8	14
482	Adilabad	Bela	512.8	585.9	14
483	Komaram Bheem Asifabad	Asifabad	501.1	569	14
484	Komaram Bheem Asifabad	Kerameri	491.9	562.6	14
485	Hyderabad	Maredpally	282.9	324.9	15
486	Karimnagar	Karimnagar	379.1	434.9	15
487	Siddipet	Kondapak	277.5	318.8	15
488	Siddipet	Markook	262.3	301.8	15
489	Siddipet	Komaravelly	288.8	331.4	15
490	Karimnagar	Thimmapur	375.7	432.5	15
491	Adilabad	Gudihathnur	521.8	602.6	15
492	Hyderabad	Musheerabad	280.2	324.6	16
493	Khammam	Madhira	346.1	401.7	16
494	Karimnagar	Chigurumamidi	300.3	349.6	16
495	Wanaparthy	Yedula	221.5	256.3	16
496	Warangal	Wardhannapet	306.8	357.3	16
497	Khammam	Vemsoor	398.5	463.7	16
498	Narayanpet	Kosgi	266.4	309.4	16
499	Warangal	Khanapur	510.7	590.4	16
500	Vikarabad	Pudur	320.4	371.1	16
501	Wanaparthy	Peddmandadi	229.8	267.1	16
502	Komaram Bheem Asifabad	Rebbana	469.6	545.9	16
503	Siddipet	Thoguta	274.8	322.8	17
504	Nalgonda	Chityala	221.2	259.4	17
505	Mahabubabad	Gudur	504.9	588.5	17

<b>ANNEXURE-II</b>					
<b>NORMAL AND ACTUALL CUMULATIVE RAINFALL</b>					
<b>S.No.</b>	<b>District</b>	<b>Mandal</b>	<b>Cumulative total</b>		
			<b>from 01-06-2025 to 31-07-2025</b>		
			<b>Normal</b>	<b>Actual</b>	<b>% Dev</b>
506	Ranga Reddy	Serilingampally	285.6	337.5	18
507	Mulugu	Venkatapuram	683.1	804.3	18
508	Komaram Bheem Asifabad	Wankdi	520	613.8	18
509	Nalgonda	Peddavura	156.9	186.5	19
510	Vikarabad	Chowdapur	250.8	299	19
511	Jangaon	Jangaon	307.5	365.9	19
512	Vikarabad	Dudyal	268	318.9	19
513	Mulugu	Mallampally	534.8	638.4	19
514	Ranga Reddy	Kandukur	226.5	271.7	20
515	Suryapet	Munagala	286.3	343.9	20
516	Siddipet	Akbarpet-Bhoompally	304.6	364.8	20
517	Bhadradi Kothagudem	Tekulapalle	425.7	511.9	20
518	Mahabubabad	Dornakal	353.3	424.2	20
519	Mulugu	Eturunagaram	593.5	714.9	20
520	Ranga Reddy	Kothur	224.4	274.4	22
521	Mahabubabad	Garla	396.3	484.6	22
522	Narayanpet	Utkoor	233.9	284.7	22
523	Vikarabad	Dharur	325.1	397.7	22
524	Karimnagar	V_Saidapur	313.4	382.9	22
525	Nalgonda	Kondamallapally	177.7	219.1	23
526	Siddipet	Doultabad	257.5	316.2	23
527	Vikarabad	Bomraspeta	245.4	302.1	23
528	Siddipet	Bejjanki	325.6	399.6	23
529	Vikarabad	Pargi	305.4	376.1	23
530	Vikarabad	Yelal	308.5	379.9	23
531	Yadadri Bhuvanagiri	Turkapalle_M	202.2	249.8	24
532	Nagarkurnool	Achampet	199.2	247.9	24
533	Hanumakonda	Velair	318.6	395.1	24
534	Karimnagar	Shankarapatnam	361.1	446.2	24
535	Ranga Reddy	Balapur	250.6	310.1	24
536	Adilabad	Ichoda	542.9	675.1	24
537	Siddipet	Husnabad	356.6	446.5	25
538	Mahabubabad	Bayyaram	408.4	512.2	25
539	Nalgonda	Adavi devula palli	201.1	254	26
540	Mahabubnagar	Musapet	224.7	282.8	26
541	Siddipet	Akkannapeta	334.3	422.6	26
542	Karimnagar	Manakondur	353.4	444	26
543	Hanumakonda	Bheemadevarapalle	325.3	412	27
544	Ranga Reddy	Kondurg	246.5	312.8	27

ANNEXURE-II					
NORMAL AND ACTUAL CUMULATIVE RAINFALL					
S.No.	District	Mandal	Cumulative total		
			from 01-06-2025 to 31-07-2025		
			Normal	Actual	% Dev
545	Narayanpet	Damaragidda	236.6	301.2	27
546	Ranga Reddy	Kadthal	196.8	251.6	28
547	Ranga Reddy	Moinabad	244.1	312.6	28
548	Nalgonda	Gudipally	143	182.5	28
549	Narayanpet	Marikal	228.4	293.3	28
550	Mahabubnagar	Addakal	237.7	304.8	28
551	Rajanna Sircilla	Ellanthakunta	285.1	364.3	28
552	Kamareddy	Sadasivanagar	376.6	484.9	29
553	Ranga Reddy	Keshampeta	218	282	29
554	Warangal	Chennaraopeta	475	611.8	29
555	Ranga Reddy	Ibrahimpattanam	224.5	291.3	30
556	Kamareddy	Bhiknur	364.7	475.1	30
557	Nalgonda	Pedda_adiserlapalle	143	187.2	31
558	Nalgonda	Devarakonda	191.6	251.4	31
559	Rajanna Sircilla	Mustabad	296.4	389.2	31
560	Mahabubnagar	Koukuntla	230.9	301.5	31
561	Nagarkurnool	Amrabad	186	246.1	32
562	Ranga Reddy	Amangal	221.4	292.7	32
563	Komaram Bheem Asifabad	Chintalamanepally	587.9	783.9	33
564	Komaram Bheem Asifabad	Kagaznagar	500.4	664	33
565	Suryapet	Mothey	202.2	270.8	34
566	Wanaparthy	Gopalpeta	229.2	307.4	34
567	Ranga Reddy	Maheshwaram	249.3	335.1	34
568	Siddipet	Siddipet_Rural	283.9	381.9	35
569	Mahabubnagar	Midjil	203.5	274.6	35
570	Narayanpet	Maddur	206.6	277.9	35
571	Komaram Bheem Asifabad	Bejjur	605.7	820.4	35
572	Siddipet	Nanganur	283.3	385.4	36
573	Nagarkurnool	Peddakothapalle	207.6	281.8	36
574	Medak	Ramayampet	304.5	415.5	36
575	Kamareddy	Machareddy	350.5	475.5	36
576	Nagarkurnool	Kalwakurthy	213.9	291.2	36
577	Sangareddy	Pulkal	308.1	426.4	38
578	Wanaparthy	Ghanpur	216.8	299.4	38
579	Nagarkurnool	Thimmajipeta	223.4	309.2	38
580	Nagarkurnool	Nagar_Kurnool	202.7	281.7	39
581	Kamareddy	Ramareddy	362.6	504	39
582	Vikarabad	Tandur	337	468.5	39

ANNEXURE-II					
NORMAL AND ACTUAL CUMULATIVE RAINFALL					
S.No.	District	Mandal	Cumulative total		
			from 01-06-2025 to 31-07-2025		
			Normal	Actual	% Dev
583	Nalgonda	Chinthapalle	166.1	232.1	40
584	Bhadradi Kothagudem	Chandrugonda	411.4	574.4	40
585	Ranga Reddy	Manchal	203.7	287.4	41
586	Siddipet	Dubbak	315.9	446.7	41
587	Bhadradi Kothagudem	Julurpad	424.2	599.9	41
588	Siddipet	Chinnakodur	270	384.4	42
589	Nagarkurnool	Telkapalle	189.5	269.7	42
590	Nagarkurnool	Lingal	206.3	293.2	42
591	Ranga Reddy	Chevella	266.1	380.2	43
592	Nagarkurnool	Tadoor	183.2	262.5	43
593	Ranga Reddy	Talakondapalle	204.9	292.4	43
594	Vikarabad	Doulatabad	274.2	391.8	43
595	Ranga Reddy	Yacharam	214.6	308.7	44
596	Vikarabad	Doma	274.4	399.8	46
597	Bhadradi Kothagudem	Aswaraopeta	422.8	618.8	46
598	Mahabubnagar	Bhoothpur	241.5	354.9	47
599	Mahabubnagar	Nawabpet	248.2	364.2	47
600	Ranga Reddy	Farooqnagar	246.7	365.7	48
601	Nagarkurnool	Urkonda	208	310.9	49
602	Siddipet	Koheda	307.9	463	50
603	Mahabubnagar	Mohammadabad	239.8	358.7	50
604	Nagarkurnool	Veldanda	199.9	308.2	54
605	Mahabubnagar	Rajapur	206	320	55
606	Nalgonda	Chandampet	171.2	267.7	56
607	Nalgonda	Gundlapalle	172.4	268.9	56
608	Yadadri Bhuvanagiri	Choutuppall	197.7	311	57
609	Siddipet	Dhoolmitta	317.5	500.2	58
610	Ranga Reddy	Shabad	243.8	385.9	58
611	Siddipet	Siddipet_Urban	285.8	455.6	59
612	Ranga Reddy	Madgul	188.4	301.3	60
613	Nalgonda	Marriguda	161.3	264.7	64
614	Nagarkurnool	Uppunuthala	179.1	295.7	65
615	Nagarkurnool	Bijinapalle	200.5	332.5	66
616	Wanaparthy	Revelly	214.7	389.6	81
617	Yadadri Bhuvanagiri	Narayanapur	154.1	293.5	90
618	Siddipet	Narayanraopet	274.5	533	94
619	Nagarkurnool	Vangoor	162.4	322.1	98
620	Mahabubnagar	Jadcherla	238.8	485	103
621	Mahabubnagar	Balanagar	209.9	511.6	144

## DEPTH TO WATER LEVELS AND PERCENTAGE OF WELLS IN DIFFERENT DEPTH RANGES, TELANGANA STATE

## DEPTH TO WATER LEVEL IN JULY-2025

S.No.	DISTRICT	NO OF WELLS	MINIMUM	MAXIMUM	AVERAGE	0 - 2 m	% OF WELLS	2 - 5 m	% OF WELLS	0-5	% OF WELLS	5 - 10 m	% OF WELLS	10-15 m	15-20m	10 - 20 m	% OF WELLS	20 - 40 m	% OF WELLS	> 40 m	% OF WELLS	>20	% OF WELLS
1	ADILABAD	26	0.70	10.00	4.00	6	23	11	42	17	65	8	30.77	1		1	4		0		0		0
2	BHADRADRI	79	0.01	42.58	6.79	18	23	26	33	44	56	20	25.32	7	3	10	13	4	5	1	1	5	6
3	BHUPALPALLY	45	1.94	37.96	9.30	2	4	8	18	10	22	19	42.22	10	4	14	31	2	4		0	2	4
4	HANUMAKONDA	25	0.30	19.30	6.59	3	12	10	40	13	52	7	28.00	3	2	5	20		0		0		0
5	HYDERABAD	27	1.05	19.85	8.03	4	15	4	15	8	30	11	40.74	4	4	8	30		0		0		0
6	JAGITYAL	40	1.33	11.90	4.49	8	20	16	40	24	60	15	37.50	1		1	3		0		0		0
7	JANGAON	37	1.46	18.35	10.14	1	3	3	8	4	11	12	32.43	17	4	21	57		0		0		0
8	JOGULAMBA(GADWAL)	30	0.61	22.26	6.34	1	3	17	57	18	60	5	16.67	4	1	5	17	2	7		0	2	7
9	KAMAREDDY	71	0.73	37.65	12.90	8	11	5	7	13	18	18	25.35	8	15	23	32	17	24		0	17	24
10	KARIMNAGAR	24	3.19	22.20	7.48		0	9	38	9	38	12	50.00	2		2	8	1	4		0	1	4
11	KHAMMAM	66	0.30	31.42	3.87	25	38	23	35	48	73	15	22.73	2		2	3	1	2		0	1	2
12	KUMURAM BHEEM	31	0.02	17.80	5.91	5	16	10	32	15	48	11	35.48	2	3	5	16		0		0		0
13	MAHABUBABAD	62	0.45	19.54	4.44	16	26	25	40	41	66	17	27.42	2	2	4	6		0		0		0
14	MAHABUBNAGAR	47	1.60	27.97	9.96	2	4	7	15	9	19	19	40.43	10	6	16	34	3	6		0	3	6
15	MANCHERIAL	25	0.01	17.52	6.45	3	12	9	36	12	48	9	36.00		4	4	16		0		0		0
16	MEDAK	59	3.62	30.34	14.16		0	5	8	5	8	12	20.34	16	15	31	53	11	19		0	11	19
17	MEDCHAL	56	1.09	77.06	12.03	2	4	13	23	15	27	9	16.07	12	13	25	45	4	7	3	5	7	13
18	MULUGU	43	0.42	23.51	6.92	1	2	20	47	21	49	13	30.23	6	1	7	16	2	5		0	2	5
19	NAGARKURNOOL	63	0.11	24.53	7.46	13	21	15	24	28	44	18	28.57	8	5	13	21	4	6		0	4	6
20	NALGONDA	134	0.60	33.53	8.85	5	4	29	22	33	25	55	41.04	28	12	40	30	5	4		0	5	4
21	NARAYANPET	28	1.03	20.90	6.93	4	14	7	25	11	39	11	39.29	4		4	14	2	7		0	2	7
22	NIRMAL	42	1.14	26.86	8.23	3	7	12	29	15	36	14	33.33	8	3	11	26	2	5		0	2	5
23	NIZAMABAD	81	0.91	30.64	11.76	4	5	8	10	12	15	19	23.46	31	10	41	51	9	11		0	9	11
24	PEDDAPALLY	33	1.35	22.68	5.28	4	12	19	58	23	70	6	18.18	1	2	3	9	1	3		0	1	3
25	RANGAREDDY	84	1.06	69.37	11.74	1	1	5	6	6	7	32	38.10	21	12	33	39	10	12	3	4	13	15
26	SANGAREDDY	81	0.53	41.93	12.35	5	6	15	19	20	25	15	18.52	21	15	36	44	9	11	1	1.23	9	11
27	SIDDIPET	67	0.60	31.22	11.89	2	3	8	12	10	15	21	31.34	17	8	25	37	11	16		0	11	16
28	SIRCILLA	37	0.57	25.55	9.35	1	3	9	24	10	27	12	32.43	8	5	13	35	2	5		0	2	5
29	SURYAPET	50	1.33	24.20	7.32	4	8	13	26	17	34	21	42.00	7	4	11	22	1	2		0	1	2
30	VIKARABAD	66	0.86	44.25	12.47	2	3	5	8	7	11	23	34.85	16	11	27	41	7	11	2	3.03	9	14
31	WANAPARTHY	30	1.05	19.80	5.32	6	20	12	40	18	60	9	30.00	2	1	3	10		0		0		0
32	WARANGAL	26	0.32	13.63	5.66	5	19	10	38	15	58	7	26.92	4		4	15		0		0		0
33	YADADRI	51	1.14	26.12	11.87	3	6	5	10	8	16	16	31.37	10	14	24	47	3	6		0	3	6
<b>STATE FIGURES</b>		<b>1666</b>	<b>0.01</b>	<b>77.06</b>	<b>8.37</b>	<b>167</b>	<b>10</b>	<b>393</b>	<b>24</b>	<b>560</b>	<b>34</b>	<b>511</b>	<b>31</b>	<b>293</b>	<b>179</b>	<b>472</b>	<b>28</b>	<b>113</b>	<b>7</b>	<b>10</b>	<b>1</b>	<b>122</b>	<b>7</b>

## NUMBER OF WELLS WITH PERCENTAGES IN DIFFERENT FLCUCTUATION RANGES, TELANGANA STATE

## FLUCTUATION FROM JULY-2024 TO JULY-2025

S.No.	DISTRICT	TOTAL MONITORED	FALL											RISE										
			NO OF WELLS FALL	% OF WELLS FALL	MINIMUM	MAXIMUM	AVERAGE	0 TO 2 m	% OF WELLS	2 TO 4 m	% OF WELLS	>4 m	% OF WELLS	NO OF WELLS RISE	% OF WELLS RISE	MIN	MAX	AVERAGE	0 TO 2 m	% OF WELLS	2 TO 4 m	% OF WELLS	>4 m	% OF WELLS
1	ADILABAD	26	11	42	-0.3	-4.00	-1.89	7	27	4	15		0	15	58	0.10	4.25	1.26	12	46	2	8	1	4
2	BHADRADRI	76	40	53	-0.06	-4.79	-1.45	28	37	10	13	2	3	36	47	0.00	20.20	1.80	29	38	3	4	4	5
3	BHUPALPALLY	45	30	67	-0.25	-19.05	-3.47	13	29	8	18	9	20	15	33	0.03	4.18	1.63	9	20	3	7	3	7
4	HANUMAKONDA	25	24	96	-0.10	-3.54	-1.87	13	52	11	44		0	1	4	0.15	0.15	0.15	1	4		0		0
5	HYDERABAD	17	10	59	-0.13	-14.74	-7.73	2	12		0	8	47	7	41	0.15	15.22	7.73	2	12		0	5	29
6	JAGITYAL	40	28	70	-0.02	-2.91	-1.08	23	58	5	13		0	12	30	0.02	2.95	0.73	11	28	1	3		0
7	JANGAON	37	33	89	-0.28	-9.36	-2.70	17	46	9	24	7	19	4	11	0.04	2.55	1.29	2	5	2	5		0
8	JOGULAMBA(GADWAL)	29	11	38	-0.03	-3.92	-1.12	9	31	2	7		0	18	62	0.08	22.55	2.50	14	48	1	3	3	10
9	KAMAREDDY	69	33	48	-0.05	-9.94	-3.03	16	23	5	7	12	17	36	52	0.02	17.55	3.91	17	25	8	12	11	16
10	KARIMNAGAR	24	19	79	-0.67	-7.78	-2.89	8	33	7	29	4	17	5	21	0.41	7.44	2.66	3	13	1	4	1	4
11	KHAMMAM	66	20	30	-0.06	-3.97	-1.24	16	24	4	6		0	46	70	0.05	4.60	1.57	32	48	10	15	4	6
12	KUMURAM BHEEM	31	13	42	-0.02	-2.37	-0.94	10	32	3	10		0	18	58	0.00	6.26	1.37	14	45	2	6	2	6
13	MAHABUBABAD	62	28	45	-0.01	-7.65	-2.04	18	29	5	8	5	8	34	55	0.00	2.76	0.81	31	50	3	5		0
14	MAHABUBNAGAR	47	18	38	-0.12	-9.51	-1.89	13	28	2	4	3	6	29	62	0.15	12.49	2.15	19	40	6	13	4	9
15	MANCHERIAL	25	21	84	-0.13	-2.44	-1.15	17		4	16		0	4	16	0.01	0.88	0.29	4	16		0		0
16	MEDAK	57	26	46	-0.21	-10.34	-3.32	13	23	3	5	10	18	31	54	0.06	15.43	3.23	10	18	14	25	7	12
17	MEDCHAL	44	20	45	-0.03	-6.82	-2.26	12	27	4	9	4	9	24	55	0.10	6.52	2.26	12	27	9	20	3	7
18	MULUGU	43	41	95	-0.23	-15.69	-3.14	20	47	11	26	10	23	2	5	0.27	0.49	0.38	2	5		0		0
19	NAGARKURNOOL	63	11	17	-0.27	-4.12	-1.20	10	16		0	1	2	52	83	0.17	7.48	2.51	27	43	10	16	15	24
20	NALGONDA	133	64	48	-0.09	-9.71	-1.90	38	29	23	17	3	2	69	52	0.02	23.29	3.23	34	26	16	12	19	14
21	NARAYANPET	28	1	4	-0.51	-0.51	-0.51	1	4		0		0	27	96	0.01	7.01	1.99	18	64	6	21	3	11
22	NIRMAL	42	30	71	-0.09	-6.15	-1.96	20	48	6	14	4	10	12	29	0.13	2.94	0.93	11	26	1	2		0
23	NIZAMABAD	75	52	69	-0.11	-13.42	-3.03	30	40	9	12	13	17	23	31	0.00	5.34	1.53	17	23	5	7	1	1
24	PEDDAPALLY	33	30	91	-0.31	-4.52	-1.94	18	55	9	27	3	9	3	9	0.06	0.29	0.16	3	9		0		0
25	RANGAREDDY	65	23	35	-0.27	-29.12	-3.10	15	23	5	8	3	5	42	65	0.02	18.10	2.25	24	37	14	22	4	6
26	SANGAREDDY	81	34	42	-0.05	-18.58	-3.60	17	21	7	9	10	12	47	58	0.29	13.58	2.06	30	37	11	14	6	7
27	SIDDIPET	66	33	50	-0.06	-7.84	-1.81	20	30	10	15	3	5	33	50	0.12	8.25	2.50	19	29	6	9	8	12
28	SIRCILLA	37	13	35	-0.32	-2.75	-1.27	9	24	4	11		0	24	65	0.15	7.97	2.13	15	41	6	16	3	8
29	SURYAPET	50	28	56	-0.02	-5.73	-1.95	16	32	9	18	3	6	22	44	0.02	6.89	2.20	10	20	10	20	2	4
30	VIKARABAD	62	17	27	-0.04	-25.53	-3.81	10	16	2	3	5	8	45	73	0.00	16.07	3.15	21	34	15	24	9	15
31	WANAPARTHY	30	5	17	-0.90	-5.10	-2.54	2	7	2	7	1	3	25	83	0.00	4.90	1.93	13	43	11	37	1	3
32	WARANGAL	26	21	81	-0.24	-5.27	-1.74	13	50	7	27	1	4	5	19	0.01	1.85	1.29	5	19		0		0
33	YADADRI	51	34	67	-0.03	-7.82	-2.30	16	31	12	24	6	12	17	33	0.06	4.25	1.68	9	18	7	14	1	2
<b>Total</b>		1605	822	51	-0.01	-29.12	-2.30	490	31	202	13	130	8	783	49	0.00	23.29	1.98	480	30	183	11	120	7

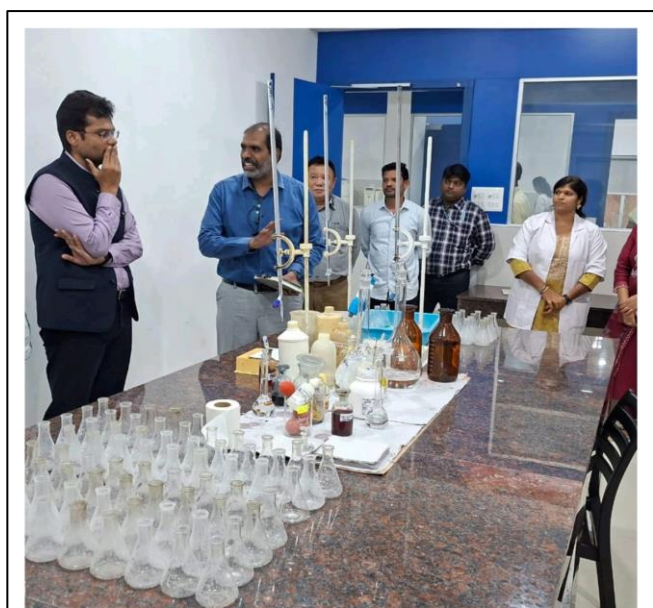
**NUMBER OF WELLS WITH PERCENTAGES IN DIFFERENT FLUCTUATION RANGES, TELANGANA STATE  
FLUCTUATION FROM MAY-2025 TO JULY-2025**

S.No	DISTRICT	TOTAL MONITORED	FALL IN WL											RISE IN WL										
			NO OF WELLS	% OF WELLS	MINIMUM	MAXIMUM	AVERAGE	0 TO 2 m	% OF WELLS	2 TO 4 m	% OF WELLS	>4 m	% OF WELLS	NO OF WELLS	% OF WELLS	MIN	MAX	AVERAGE	0 TO 2 m	% OF WELLS	2 TO 4 m	% OF WELLS	>4 m	% OF WELLS
1	ADILABAD	26		0					0		0		0	27	104	0.67	44.30	7.62	4	15	7	27	16	62
2	BHADRADRI	78	3	4	-0.09	-1.59	-0.70	3	4		0		0	73	94	0.00	22.53	3.71	28	36	20	26	25	32
3	BHUPALPALLY	45	4	9	-0.30	-2.8	-1.66	3	7	1	2		0	40	89	0.32	7.46	2.00	27	60	9	20	4	9
4	HANUMAKONDA	25	6	24	-0.10	-2.60	-1.02	5	20	1	4		0	20	80	0.10	9.60	2.86	9	36	7	28	4	16
5	HYDERABAD	27	1	4	-0.22	-0.22	-0.22	1	4		0		0	27	100	0.11	3.29	1.31	21	78	6	22		0
6	JAGITYAL	40	3	8	-0.15	-1.77	-0.75	3	8		0		0	38	95	0.00	4.55	1.37	31	78	6	15	1	3
7	JANGAON	37	23	62	-0.01	-4.67	-1.21	18	49	4	11	1	3	15	41	0.03	7.09	1.72	10	27	3	8	2	5
8	JOGULAMBA(GADWAL)	30	7	23	-0.11	-2.3	-0.80	6	20	1	3		0	24	80	0.08	3.60	1.32	17	57	7	23		0
9	KAMAREDDY	71	19	27	-0.02	-6.3	-2.06	12	17	4	6	3	4	51	72	0.00	15.75	3.33	22	31	14	20	15	21
10	KARIMNAGAR	24	8	33	-0.05	-2.76	-0.74	7	29	1	4		0	17	71	0.04	12.04	2.30	12	50	3	13	2	8
11	KHAMMAM	66	4	6	-0.05	-0.21	-0.14	4	6		0		0	63	95	0.13	6.54	2.16	38	58	17	26	8	12
12	KUMURAM BHEEM	31		0					0		0		0	31	100	0.00	20.22	3.63	11	35	11	35	9	29
13	MAHABUBABAD	62	1	2	-0.60	-0.60	-0.60	1	2		0		0	60	97	0.18	16.67	3.14	28	45	20	32	12	19
14	MAHABUBNAGAR	47	12	26	-0.02	-1.98	-0.76	12	26		0		0	34	72	0.00	10.57	2.47	20	43	10	21	4	9
15	MANCHERIAL	25	8	32	-0.11	-2.03	-0.51	7	28	1	4		0	17	68	0.00	10.38	1.37	14	56	2	8	1	4
16	MEDAK	58	14	24	-0.18	-6.24	-1.80	11	19	2	3	1	2	43	74	0.26	10.78	2.27	21	36	17	29	5	9
17	MEDCHAL	55	9	16	-0.06	-10.02	-2.72	5	9	2	4	2	4	45	82	0.26	7.10	2.68	15	27	21	38	9	16
18	MULUGU	43	1	2	-0.74	-0.74	-0.74	1	2		0		0	39	91	0.53	6.89	3.00	12	28	15	35	12	28
19	NAGARKURNOOL	63	13	21	-0.02	-3.1	-1.13	10	16	3	5		0	50	79	0.00	2.49	0.65	47	75	3	5		0
20	NALGONDA	134	88	66	-0.02	-5.4	-1.10	75	56	9	7	4	3	47	35	0.00	7.95	1.13	36	27	9	7	2	1
21	NARAYANPET	28	1	4	-0.08	-0.08	-0.08	1	4		0		0	28	100	0.14	3.74	1.83	16	57	12	43		0
22	NIRMAL	42	1	2	-0.57	-0.6	-0.57	1	2		0		0	40	95	0.19	9.44	2.61	22	52	9	21	9	21
23	NIZAMABAD	80	20	25	-0.07	-14.5	-2.28	14	18	4	5	2	3	60	75	0.10	7.88	1.64	43	54	13	16	4	5
24	PEDDAPALLY	33	5	15	-0.38	-1.75	-0.80	5	15		0		0	29	88	0.22	3.86	1.77	17	52	12	36		0
25	RANGAREDDY	81	22	27	-0.01	-30.4	-2.14	19	23	2	2	1	1	59	73	0.02	40.63	3.60	34	42	13	16	12	15
26	SANGAREDDY	80	11	14	-0.17	-8.10	-2.38	7	9	2	3	2	3	68	85	0.15	23.23	3.18	27	34	26	33	15	19
27	SIDDIPET	67	26	39	-0.28	-4.27	-1.70	14	21	11	16	1	1	40	60	0.03	7.93	2.29	22	33	11	16	7	10
28	SIRCILLA	37	8	22	-0.03	-1.0	-0.42	8	22		0		0	29	78	0.47	6.73	2.23	15	41	11	30	3	8
29	SURYAPET	50	34	68	-0.07	-9.17	-1.56	28	56	1	2	5	10	17	34	0.26	5.41	1.39	13	26	3	6	1	2
30	VIKARABAD	64	9	14	-0.02	-19.2	-2.97	7	11	1	2	1	2	54	84	0.07	22.76	4.30	20	31	17	27	17	27
31	WANAPARTHY	30		0					0		0		0	31	103	0.10	2.40	1.02	28	93	3	10		0
32	WARANGAL	26	7	27	-0.31	-2.00	-1.33	7	27		0		0	20	77	0.31	3.17	1.20	17	65	3	12		0
33	YADADRI	51	18	35	-0.01	-1.60	-0.72	18	35		0		0	34	67	0.02	2.21	0.61	33	65	1	2		0
	<b>Total</b>	<b>1656</b>	<b>386</b>	<b>23</b>	<b>-0.01</b>	<b>-30.4</b>	<b>-1.19</b>	<b>313</b>	<b>19</b>	<b>50</b>	<b>3</b>	<b>23</b>	<b>1</b>	<b>1270</b>	<b>77</b>	<b>0.00</b>	<b>44.30</b>	<b>2.35</b>	<b>730</b>	<b>44</b>	<b>341</b>	<b>21</b>	<b>199</b>	<b>12</b>

## NUMBER OF WELLS WITH PERCENTAGES IN DIFFERENT FLUCTUATION RANGES, TELANGANA STATE

## FLUCTUATION DECADAL MEAN FROM JULY-2015 TO JULY-2024 WRT JULY-2025

S. No.	DISTRICT	TOTAL MONITORED	FALL IN WL											RISE IN WL										
			NO OF WELLS FALL	% OF WELLS FALL	MINIMUM	MAXIMUM	AVERAGE	0 TO 2 m	% OF WELLS	2 TO 4 m	% OF WELLS	>4 m	% OF WELLS	NO OF WELLS RISE	% OF WELLS RISE	MIN	MAX	AVERAGE	0 TO 2 m	% OF WELLS	2 TO 4 m	% OF WELLS	>4 m	% OF WELLS
1	ADILABAD	15	4	27	-0.16	-3.46	-1.71	2	13	2	13		0	11	73	0.12	5.19	1.68	8	53	2	13	1	7
2	BHADRADRI	53	17	32	-0.08	-5.48	-1.62	12	23	4	8	1	2	36	68	0.39	22.84	2.50	22	42	10	19	4	8
3	BHUPALPALLY	28	12	43	-0.2	-10.01	-3.2	5	18	4	14	3	11	16	57	0.08	7.15	1.87	9	32	6	21	1	4
4	HANUMAKONDA	17	8	47	-0.064	-3.272	-1.46	7	41	1	6		0	9	53	0.70	2.86	1.74	6	35	3	18		0
5	HYDERABAD	18	11	61	-0.12	-9.22	-3.52	4	22	3	17	4	22	7	39	0.34	2.58	1.79	3	17	4	22		0
6	JAGITYAL	30	8	27	-0.13	-2.29	-0.97	7	23	1	3		0	22	73	0.16	4.24	1.46	18	60	3	10	1	3
7	JANGAON	24	10	42	-0.04	-5.02	-1.96	6	25	2	8	2	8	14	58	0.48	5.44	2.44	7	29	4	17	3	13
8	JOGULAMBA(GADWAL)	16	1	6	-1.20	-1.20	-1.20	1	6		0		0	15	94	0.09	12.73	3.81	5	31	5	31	5	31
9	KAMAREDDY	35	11	31	-0.09	-6.49	-2.00	8	23	2	6	1	3	24	69	0.36	12.77	3.55	10	29	6	17	8	23
10	KARIMNAGAR	17	8	47	-0.93	-4.70	-2.08	5	29	2	12	1	6	9	53	0.10	10.12	3.87	3	18	3	18	3	18
11	KHAMMAM	41	10	24	-0.07	-1.03	-0.43	10	24		0		0	31	76	0.09	5.24	1.71	23	56	5	12	3	7
12	KUMURAM BHEEM	19	6	32	-0.15	-3.22	-1.23	4	21	2	11		0	13	68	0.02	2.05	0.74	12	63	1	5		0
13	MAHABUBABAD	33	4	12	-0.60	-6.48	-2.56	3	9		0	1	3	29	88	0.12	4.72	1.44	20	61	8	24	1	3
14	MAHABUBNAGAR	23	3	13	-0.7	-7.05	-3.47	1	4	1	4	1	4	20	87	0.42	14.20	4.69	3	13	7	30	10	43
15	MANCHERIAL	17	11	65	-0.06	-8.47	-1.67	9	53	1	6	1	6	6	35	0.01	2.37	0.89	5	29	1	6		0
16	MEDAK	28	7	25	-0.22	-2.03	-1.18	6	21	1	4		0	21	75	1.59	15.89	5.2	4	14	4	14	13	46
17	MEDCHAL	27	14	52	-0.18	-4.29	-1.98	7	26	6	22	1	4	13	48	0.39	10.80	3.58	3	11	7	26	3	11
18	MULUGU	25	17	68	-0.05	-11.02	-2.14	13	52	2	8	2	8	8	32	0.06	11.16	2.18	7	28		0	1	4
19	NAGARKURNOOL	32	3	9	-0.1	-2.33	-0.93	2	6	1	3		0	29	91	0.47	13.67	4.54	9	28	4	13	16	50
20	NALGONDA	80	28	35	-0.10	-8.47	-1.84	17	21	9	11	2	3	52	65	0.17	10.55	3.21	28	35	9	11	15	19
21	NARAYANPET	15	1	7	-0.39	-0.39	-0.39	1	7		0		0	14	93	0.02	10.14	4.29	2	13	5	33	7	47
22	NIRMAL	17	10	59	-0.15	-4.47	-1.08	8	47	1	6	1	6	7	41	0.30	3.62	2.23	2	12	5	29		0
23	NIZAMABAD	45	20	44	-0.2	-11.42	-3.4	7	16	6	13	7	16	25	56	0.11	10.21	2.42	15	33	3	7	7	16
24	PEDDAPALLY	17	8	47	-0.12	-2.88	-1.32	5	29	3	18		0	9	53	0.46	4.82	2.15	5	29	2	12	2	12
25	RANGAREDDY	37	8	22	-0.36	-21.26	-5.08	4	11	1	3	3	8	29	78	0.08	13.83	2.65	16	43	9	24	4	11
26	SANGAREDDY	24	7	29	-0.31	-22.99	-5.76	3	13	1	4	3	13	17	71	0.67	9.68	4.94	5	21	4	17	8	33
27	SIDDIPET	48	16	33	-0.05	-6.37	-1.85	10	21	4	8	2	4	32	67	0.02	8.81	3.24	13	27	7	15	12	25
28	SIRCILLA	27	5	19	-0.15	-4.99	-1.70	3	11	1	4	1	4	22	81	0.03	8.48	2.43	12	44	5	19	5	19
29	SURYAPET	30	13	43	-0.09	-4.58	-1.23	10	33	2	7	1	3	17	57	0.09	7.29	1.97	14	47		0	3	10
30	VIKARABAD	27	9	33	-0.1	-12.93	-2.61	6	22	2	7	1	4	18	67	0.39	6.92	2.95	7	26	7	26	4	15
31	WANAPARTHY	13	1	8	-0.55	-0.55	-0.55	1	8		0		0	12	92	0.40	5.63	1.86	6	46	5	38	1	8
32	WARANGAL	18	7	39	-0.26	-2.41	-1.31	5	28	2	11		0	11	61	0.13	2.37	1.30	8	44	3	17		0
33	YADADRI	35	20	57	-0.46	-8.31	-2.89	8	23	5	14	7	20	15	43	0.29	8.15	1.96	10	29	2	6	3	9
	<b>Total</b>	<b>931</b>	<b>318</b>	<b>34</b>	<b>-0.04</b>	<b>-22.99</b>	<b>-2.01</b>	<b>200</b>	<b>21</b>	<b>72</b>	<b>8</b>	<b>46</b>	<b>5</b>	<b>613</b>	<b>66</b>	<b>0.01</b>	<b>22.84</b>	<b>2.65</b>	<b>320</b>	<b>34</b>	<b>149</b>	<b>16</b>	<b>144</b>	<b>15</b>



**SAVE WATER- SAVE LIFE AND SAVE EARTH**

## కేసినాడు

# పెరిగిన భూగర్భ జలమట్టం

**గతేడాది మే నెలలో పోల్ చేత 0.30 మీటర్లు పైకి**  
**18 బిల్లుల్లో పెరుగుదల..**  
**2024-25 నీటి సంవత్సరంలో 32 కాళం అధికంగా వర్షాలు**



భూగర్భ జల మట్టం పెరిగింది. గతేడాది మే నెలలో పోల్ చేత 0.30 మీటర్లు పైకి పెరిగింది. 18 బిల్లుల్లో పెరుగుదల ఉంది. 2024-25 నీటి సంవత్సరంలో 32 కాళం అధికంగా వర్షాలు పడినట్లు తెలుస్తోంది.

**32 కాళం అధికంగా వర్షాలు**  
 2024-25 నీటి సంవత్సరంలో (అక్టోబరు నుండి మే) 32 కాళం అధికంగా వర్షాలు పడినట్లు తెలుస్తోంది. గతేడాది మే నెలలో పోల్ చేత 0.30 మీటర్లు పైకి పెరిగింది. 18 బిల్లుల్లో పెరుగుదల ఉంది. 2024-25 నీటి సంవత్సరంలో 32 కాళం అధికంగా వర్షాలు పడినట్లు తెలుస్తోంది.

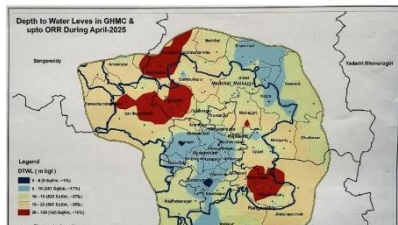
## Path cleared for Injection Wells for RWH pits in GHMC limits



The four District Ground Water Officers have been told to facilitate and oversee the implementation of these wells, ensuring compliance with prescribed guidelines.

**Earlier, GHWSRB released**  
 Earlier, GHWSRB released 17,000 residential projects for install RWH pits and injection wells or pay double for water tankers.

### Serilingampally, Malkajgiri and other areas within Telangana's ORR dip into red zone for groundwater extraction



Depth to Water Levels in GHMC & upto ORR During April-2025

Legend (in m):  
 0 - 10 (0.00 - 10.00)  
 10 - 20 (10.00 - 20.00)  
 20 - 30 (20.00 - 30.00)  
 30 - 40 (30.00 - 40.00)  
 40 - 50 (40.00 - 50.00)  
 50 - 60 (50.00 - 60.00)  
 60 - 70 (60.00 - 70.00)  
 70 - 80 (70.00 - 80.00)  
 80 - 90 (80.00 - 90.00)  
 90 - 100 (90.00 - 100.00)  
 100 - 110 (100.00 - 110.00)  
 110 - 120 (110.00 - 120.00)  
 120 - 130 (120.00 - 130.00)  
 130 - 140 (130.00 - 140.00)  
 140 - 150 (140.00 - 150.00)  
 150 - 160 (150.00 - 160.00)  
 160 - 170 (160.00 - 170.00)  
 170 - 180 (170.00 - 180.00)  
 180 - 190 (180.00 - 190.00)  
 190 - 200 (190.00 - 200.00)  
 200 - 210 (200.00 - 210.00)  
 210 - 220 (210.00 - 220.00)  
 220 - 230 (220.00 - 230.00)  
 230 - 240 (230.00 - 240.00)  
 240 - 250 (240.00 - 250.00)  
 250 - 260 (250.00 - 260.00)  
 260 - 270 (260.00 - 270.00)  
 270 - 280 (270.00 - 280.00)  
 280 - 290 (280.00 - 290.00)  
 290 - 300 (290.00 - 300.00)  
 300 - 310 (300.00 - 310.00)  
 310 - 320 (310.00 - 320.00)  
 320 - 330 (320.00 - 330.00)  
 330 - 340 (330.00 - 340.00)  
 340 - 350 (340.00 - 350.00)  
 350 - 360 (350.00 - 360.00)  
 360 - 370 (360.00 - 370.00)  
 370 - 380 (370.00 - 380.00)  
 380 - 390 (380.00 - 390.00)  
 390 - 400 (390.00 - 400.00)  
 400 - 410 (400.00 - 410.00)  
 410 - 420 (410.00 - 420.00)  
 420 - 430 (420.00 - 430.00)  
 430 - 440 (430.00 - 440.00)  
 440 - 450 (440.00 - 450.00)  
 450 - 460 (450.00 - 460.00)  
 460 - 470 (460.00 - 470.00)  
 470 - 480 (470.00 - 480.00)  
 480 - 490 (480.00 - 490.00)  
 490 - 500 (490.00 - 500.00)

### IEC-Activities

#### Government of Telangana Ground Water Department National Hydrology Project HIS Daily Data

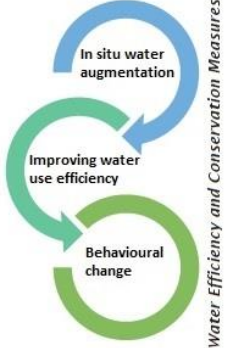
Location	Date	Rainfall(mm)	Ground Water level(m)
Directorate of Ground Water Department premises	24 SEP 2024	0.00	5.74
1. Annual Normal Rainfall: (712mm)		809.2	
2. Cumulative Rainfall During the Water year (June-2024-30 SEP 2024)		963.7	



Watch live @ youtube.com/4444444444  
 తెలంగాణ రాష్ట్రంలో భూగర్భ జలాల సీతగతులు - సమావేశం  
 ధ్వని నం: 040 27091431, 27091432, 27091433

## When the well is dry, we know the worth of water.

-Josephine Franklyn



Water Efficiency and Conservation Measures



पानी की महिमा अपरम्यार  
 जल बचाने का सपना करग साकार  
 पानी नहीं अगर बचाओगे  
 तो दोस्तों प्यासे ही रह जाओगे!

More Visit SmileWorld.in

**"You Can't Manage What You Can't Measure"- Peter Drucker**



## GOVERNMENT OF TELANGANA GROUND WATER DEPARTMENT HYDERABAD - 500004

D. No. 6-2-916/1, Chinthalbasti, Khairatabad  
 Phone: 040-23314979, Fax No: 040-23314950  
 Email Id: director.tgsgwd@gmail.com  
 Website: [gwd.telangana.gov.in](http://gwd.telangana.gov.in)